

STX1A Rabbit mAb

Catalog No: #56843

Package Size: #56843-1 50ul #56843-2 100ul

Orders: order@signalwayantibody.com

Support: tech@signalwayantibody.com

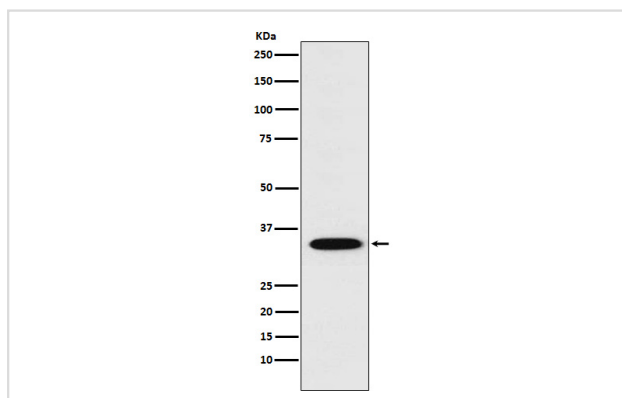
Description

Product Name	STX1A Rabbit mAb
Host Species	Rabbit
Clonality	Monoclonal
Isotype	Rabbit IgG
Purification	Affinity-chromatography
Applications	WB IP FC
Species Reactivity	Human Mouse Rat
Specificity	STX1A Antibody detects endogenous levels of total STX1A
Immunogen Description	A synthesized peptide derived from human STX1A
Other Names	HPC 1; P35-1; STX1; STX1A; SYN1A; Syntaxin-1A;
Accession No.	Uniprot:Q16623
Uniprot	Q16623
Calculated MW	33kDa
Formulation	Rabbit IgG in phosphate buffered saline , pH 7.4, 150mM NaCl, 0.02% sodium azide and 50% glycerol.
Storage	Store at +4 Λ C short term. Store at -20 Λ C long term. Avoid freeze / thaw cycle.

Application Details

WB:1:1000~1:5000IP:1:50FC:1:50

Images



Western blot analysis of STX1A expression in SH-SY5Y cell lysate.

Product Description

Potentially involved in docking of synaptic vesicles at presynaptic active zones. May play a critical role in neurotransmitter exocytosis. May mediate Ca²⁺-regulation of exocytosis acrosomal reaction in sperm.

Note: This product is for in vitro research use only