

CHMP2B Rabbit mAb

Catalog No: #56844

Package Size: #56844-1 50ul #56844-2 100ul

Orders: order@signalwayantibody.com

Support: tech@signalwayantibody.com

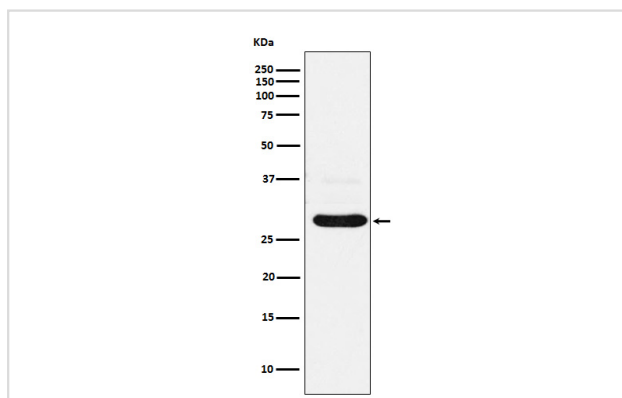
Description

| | |
|-----------------------|--|
| Product Name | CHMP2B Rabbit mAb |
| Host Species | Rabbit |
| Clonality | Monoclonal |
| Isotype | Rabbit IgG |
| Purification | Affinity-chromatography |
| Applications | WB ICC/IF IP FC |
| Species Reactivity | Human Mouse Rat |
| Specificity | CHMP2B Antibody detects endogenous levels of total CHMP2B |
| Immunogen Description | A synthesized peptide derived from human CHMP2B |
| Other Names | ALS17; CHMP2b; DMT1; hVps2-2; VPS2B; |
| Accession No. | Uniprot:Q9UQN3 |
| Uniprot | Q9UQN3 |
| Calculated MW | 28kDa |
| Formulation | Rabbit IgG in phosphate buffered saline , pH 7.4, 150mM NaCl, 0.02% sodium azide and 50% glycerol. |
| Storage | Store at +4 Λ C short term. Store at -20 Λ C long term. Avoid freeze / thaw cycle. |

Application Details

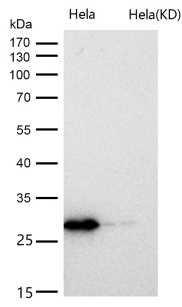
WB:1:500~1:2000IC/IF:1:50~1:200IP:1:50FC:1:50

Images



Western blot analysis of CHMP2B expression in A431 cell lysate.

All lanes use the Antibody at 1:1K dilution for 1 hour at room temperature.



Product Description

Probable core component of the endosomal sorting required for transport complex III (ESCRT-III) which is involved in multivesicular bodies (MVBs) formation and sorting of endosomal cargo proteins into MVBs.

Note: This product is for in vitro research use only