

GOT2 Rabbit mAb

Catalog No: #56845

Package Size: #56845-1 50ul #56845-2 100ul

Orders: order@signalwayantibody.com

Support: tech@signalwayantibody.com

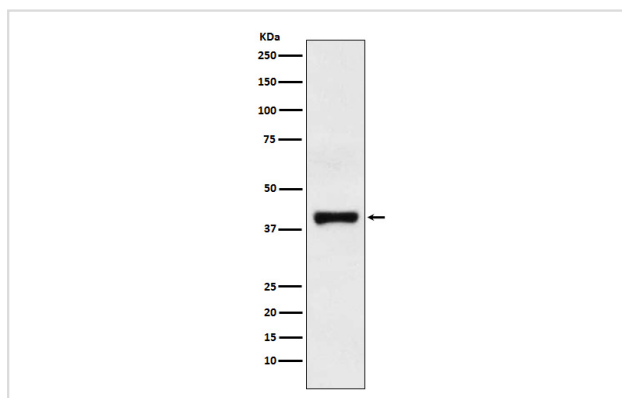
Description

Product Name	GOT2 Rabbit mAb
Host Species	Rabbit
Clonality	Monoclonal
Isotype	Rabbit IgG
Purification	Affinity-chromatography
Applications	WB IHC IP
Species Reactivity	Human Mouse Rat
Specificity	GOT2 Antibody detects endogenous levels of total GOT2
Immunogen Description	A synthesized peptide derived from human GOT2
Other Names	KAT4; KATIV; mitAAT;
Accession No.	Uniprot:P00505
Uniprot	P00505
Calculated MW	43kDa
Formulation	Rabbit IgG in phosphate buffered saline , pH 7.4, 150mM NaCl, 0.02% sodium azide and 50% glycerol.
Storage	Store at +4 Λ C short term. Store at -20 Λ C long term. Avoid freeze / thaw cycle.

Application Details

WB:1:500~1:2000IHC:1:50~1:200IP:1:50FC:1:100

Images



Western blot analysis of GOT2 expression in HepG2 cell lysate.

Product Description

Plays a key role in amino acid metabolism. Important for metabolite exchange between mitochondria and cytosol. Facilitates cellular uptake of long-chain free fatty acids.

Note: This product is for in vitro research use only