

MYH7B Rabbit mAb

Catalog No: #56846

Package Size: #56846-1 50ul #56846-2 100ul

Orders: order@signalwayantibody.com

Support: tech@signalwayantibody.com

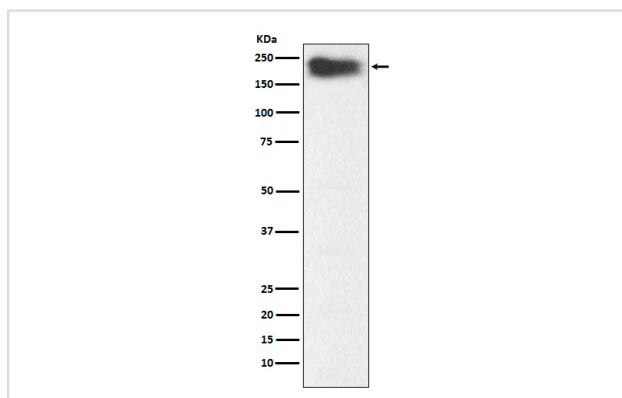
Description

| | |
|-----------------------|--|
| Product Name | MYH7B Rabbit mAb |
| Host Species | Rabbit |
| Clonality | Monoclonal |
| Isotype | Rabbit IgG |
| Purification | Affinity-chromatography |
| Applications | WB IHC |
| Species Reactivity | Human Mouse Rat |
| Specificity | MYH7B Antibody detects endogenous levels of total MYH7B |
| Immunogen Description | A synthesized peptide derived from human MYH7B |
| Other Names | Myh7b; Myosin-7B; |
| Accession No. | Uniprot:A7E2Y1 |
| Uniprot | A7E2Y1 |
| Calculated MW | 221kDa |
| Formulation | Rabbit IgG in phosphate buffered saline , pH 7.4, 150mM NaCl, 0.02% sodium azide and 50% glycerol. |
| Storage | Store at +4 Λ C short term. Store at -20 Λ C long term. Avoid freeze / thaw cycle. |

Application Details

WB:1:500~1:2000IHC:1:50~1:200

Images



Western blot analysis of MYH7B expression in Human fetal muscle lysate.

Product Description

Involved in muscle contraction.

Note: This product is for in vitro research use only