

KLC1 Rabbit mAb

Catalog No: #56849

Package Size: #56849-1 50ul #56849-2 100ul

Orders: order@signalwayantibody.com

Support: tech@signalwayantibody.com

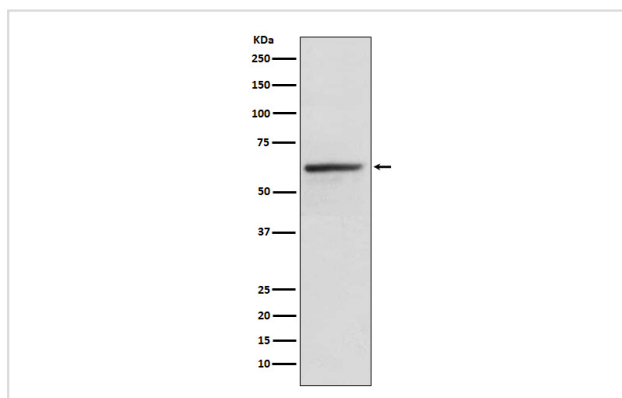
Description

Product Name	KLC1 Rabbit mAb
Host Species	Rabbit
Clonality	Monoclonal
Isotype	Rabbit IgG
Purification	Affinity-chromatography
Applications	WB IHC ICC/IF IP FC
Species Reactivity	Human Mouse Rat
Specificity	KLC1 Antibody detects endogenous levels of total KLC1
Immunogen Description	A synthesized peptide derived from human KLC1
Other Names	Kinesin2; KLC; Klc1; KNS2; KNS2A;
Accession No.	Uniprot:Q07866
Uniprot	Q07866
Calculated MW	65kDa
Formulation	Rabbit IgG in phosphate buffered saline , pH 7.4, 150mM NaCl, 0.02% sodium azide and 50% glycerol.
Storage	Store at +4Λ C short term. Store at -20Λ C long term. Avoid freeze / thaw cycle.

Application Details

WB:1:500~1:2000IHC:1:50~1:200ICC/IF:1:50~1:200IP:1:50FC:1:50

Images



Western blot analysis of KLC1 expression in HeLa cell lysate.

Product Description

Kinesin is a microtubule-associated force-producing protein that may play a role in organelle transport. The light chain may function in coupling of cargo to the heavy chain or in the modulation of its ATPase activity.

Note: This product is for in vitro research use only