

## DOK1 Rabbit mAb

Catalog No: #56850

Package Size: #56850-1 50ul #56850-2 100ul

Orders: order@signalwayantibody.com

Support: tech@signalwayantibody.com

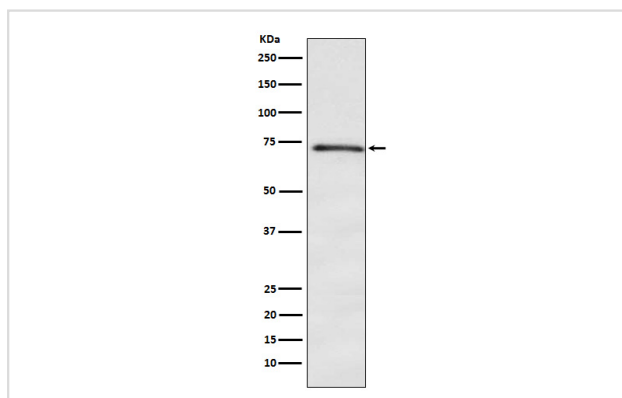
## Description

Product Name	DOK1 Rabbit mAb
Host Species	Rabbit
Clonality	Monoclonal
Isotype	Rabbit IgG
Purification	Affinity-chromatography
Applications	WB ICC/IF
Species Reactivity	Human Mouse Rat
Specificity	DOK1 Antibody detects endogenous levels of total DOK1
Immunogen Description	A synthesized peptide derived from human DOK1
Other Names	DOK1; p62(dok); P62DOK; pp62;
Accession No.	Uniprot:Q99704
Uniprot	Q99704
Calculated MW	65kDa
Formulation	Rabbit IgG in phosphate buffered saline , pH 7.4, 150mM NaCl, 0.02% sodium azide and 50% glycerol.
Storage	Store at +4 $\Lambda$ C short term. Store at -20 $\Lambda$ C long term. Avoid freeze / thaw cycle.

## Application Details

WB: 1:500~1:2000 ICC/IF: 1:50~1:200

## Images



Western blot analysis of DOK1 expression in K562 cell lysate.

## Product Description

DOK proteins are enzymatically inert adaptor or scaffolding proteins. They provide a docking platform for the assembly of multimolecular signaling complexes. DOK1 appears to be a negative regulator of the insulin signaling pathway. Modulates integrin activation by competing with talin for the same binding site on ITGB3.

---

Note: This product is for in vitro research use only