

Smg1 Rabbit mAb

Catalog No: #56855

Package Size: #56855-1 50ul #56855-2 100ul

Orders: order@signalwayantibody.com

Support: tech@signalwayantibody.com

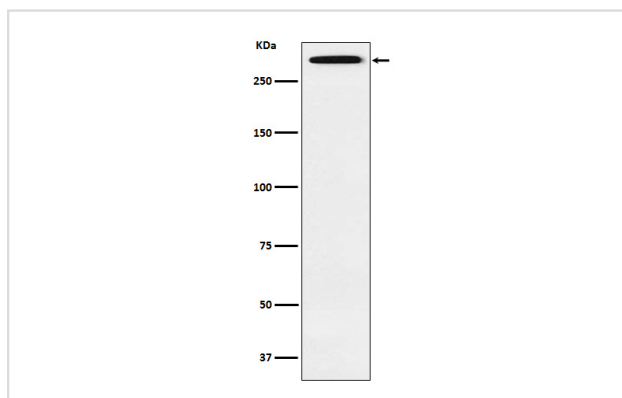
Description

Product Name	Smg1 Rabbit mAb
Host Species	Rabbit
Clonality	Monoclonal
Isotype	Rabbit IgG
Purification	Affinity-chromatography
Applications	WB
Species Reactivity	Human Mouse Rat
Specificity	Smg1 Antibody detects endogenous levels of total Smg1
Immunogen Description	A synthesized peptide derived from human Smg1
Other Names	61E3.4; ATX; hSMG1; LIP; smg1;
Accession No.	Uniprot:Q96Q15
Uniprot	Q96Q15
Calculated MW	410kDa
Formulation	Rabbit IgG in phosphate buffered saline , pH 7.4, 150mM NaCl, 0.02% sodium azide and 50% glycerol.
Storage	Store at +4Λ C short term. Store at -20Λ C long term. Avoid freeze / thaw cycle.

Application Details

WB: 1:500~1:2000

Images



Western blot analysis of Smg1 expression in Saos2 cell lysate.

Product Description

Serine/threonine protein kinase involved in both mRNA surveillance and genotoxic stress response pathways. Recognizes the substrate consensus sequence [ST]-Q. Plays a central role in nonsense-mediated decay (NMD) of mRNAs containing premature stop codons by phosphorylating UPF1/RENT1.

Note: This product is for in vitro research use only