

Gemin 2 Rabbit mAb

Catalog No: #56857

Package Size: #56857-1 50ul #56857-2 100ul

Orders: order@signalwayantibody.com

Support: tech@signalwayantibody.com

Description

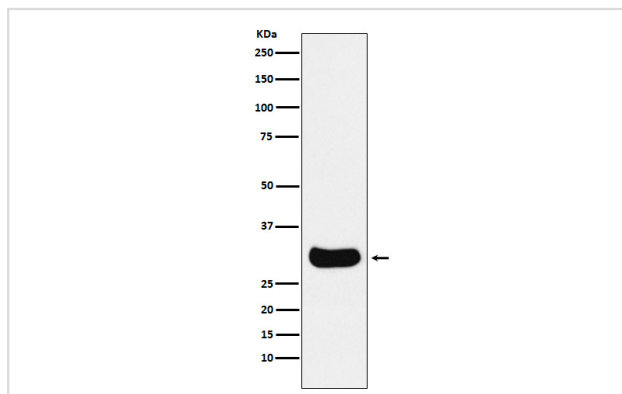
Product Name	Gemin 2 Rabbit mAb
Host Species	Rabbit
Clonality	Monoclonal
Isotype	Rabbit IgG
Purification	Affinity-chromatography
Applications	WB IP
Species Reactivity	Human Mouse Rat
Specificity	Gemin 2 Antibody detects endogenous levels of total Gemin 2
Immunogen Description	A synthesized peptide derived from human Gemin 2
Other Names	gemin2; SIP 1; SIP1; SIP1 delta; SMN interacting protein 1; Survival interacting protein 1;
Accession No.	Uniprot:O14893
Uniprot	O14893
Calculated MW	31kDa
Formulation	Rabbit IgG in phosphate buffered saline , pH 7.4, 150mM NaCl, 0.02% sodium azide and 50% glycerol.
Storage	Store at +4 Λ C short term. Store at -20 Λ C long term. Avoid freeze / thaw cycle.

Application Details

WB: 1:500~1:2000

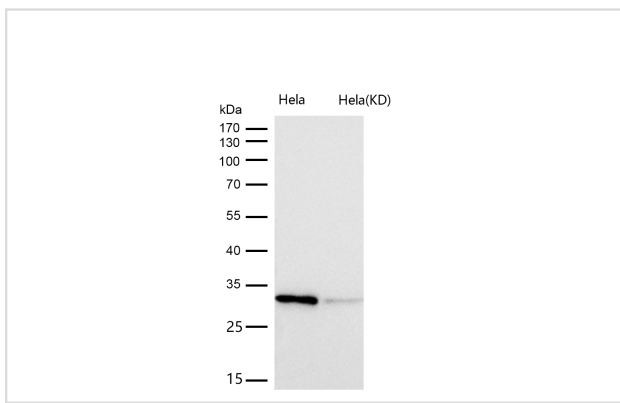
IP: 1:50

Images



Western blot analysis of Gemin 2 expression in HepG2 cell lysate.

All lanes use the Antibody at 1:1K dilution for 1 hour at room temperature.



Product Description

The SMN complex plays an essential role in spliceosomal snRNP assembly in the cytoplasm and is required for pre-mRNA splicing in the nucleus.

Note: This product is for in vitro research use only