

MICA Rabbit mAb

Catalog No: #56860

Package Size: #56860-1 50ul #56860-2 100ul

Orders: order@signalwayantibody.comSupport: tech@signalwayantibody.com

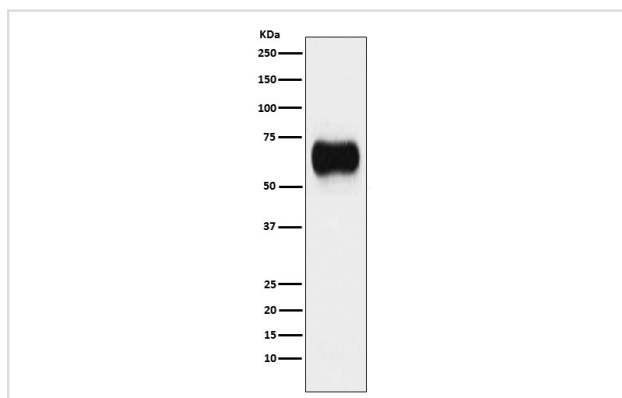
Description

Product Name	MICA Rabbit mAb
Host Species	Rabbit
Clonality	Monoclonal
Isotype	Rabbit IgG
Purification	Affinity-chromatography
Applications	WB
Species Reactivity	Human
Specificity	MICA Antibody detects endogenous levels of total MICA
Immunogen Description	A synthesized peptide derived from human MICA
Other Names	PERB11.1; MICA;
Accession No.	Uniprot:Q29983
Uniprot	Q29983
Calculated MW	42-70kDa
Formulation	Rabbit IgG in phosphate buffered saline , pH 7.4, 150mM NaCl, 0.02% sodium azide and 50% glycerol.
Storage	Store at +4Λ C short term. Store at -20Λ C long term. Avoid freeze / thaw cycle.

Application Details

WB: 1:500~1:2000

Images



Western blot analysis of MICA expression in A431 cell lysate.

Product Description

Seems to have no role in antigen presentation. Acts as a stress-induced self-antigen that is recognized by gamma delta T-cells. Ligand for the KLRK1/NKG2D receptor. Binding to KLRK1 leads to cell lysis.

Note: This product is for in vitro research use only