

## SERPING1 Rabbit mAb

Catalog No: #56864

Package Size: #56864-1 50ul #56864-2 100ul

Orders: order@signalwayantibody.com

Support: tech@signalwayantibody.com

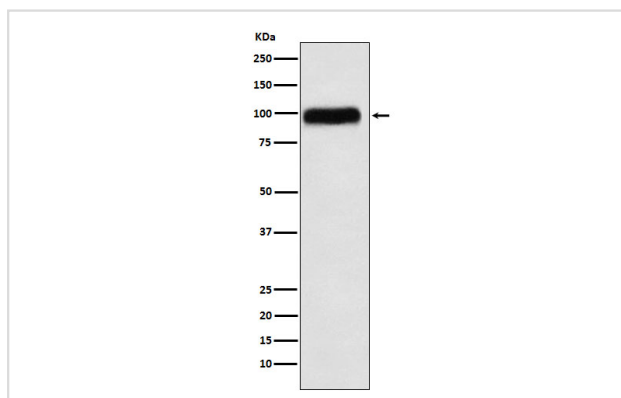
## Description

Product Name	SERPING1 Rabbit mAb
Host Species	Rabbit
Clonality	Monoclonal
Isotype	Rabbit IgG
Purification	Affinity-chromatography
Applications	WB IP
Species Reactivity	Human Mouse Rat
Specificity	SERPING1 Antibody detects endogenous levels of total SERPING1
Immunogen Description	A synthesized peptide derived from human SERPING1
Other Names	C1IN; C1Inh; C1NH; HAE1; HAE2;
Accession No.	Uniprot:P05155
Uniprot	P05155
Calculated MW	100kDa
Formulation	Rabbit IgG in phosphate buffered saline , pH 7.4, 150mM NaCl, 0.02% sodium azide and 50% glycerol.
Storage	Store at +4Λ C short term. Store at -20Λ C long term. Avoid freeze / thaw cycle.

## Application Details

WB:1:500~1:2000IP:1:50

## Images



Western blot analysis of SERPING1 expression in Human plasma lysate.

## Product Description

Activation of the C1 complex is under control of the C1-inhibitor. It forms a proteolytically inactive stoichiometric complex with the C1r or C1s proteases.

---

Note: This product is for in vitro research use only