

CNTP2 Rabbit mAb

Catalog No: #56867

Package Size: #56867-1 50ul #56867-2 100ul

Orders: order@signalwayantibody.com

Support: tech@signalwayantibody.com

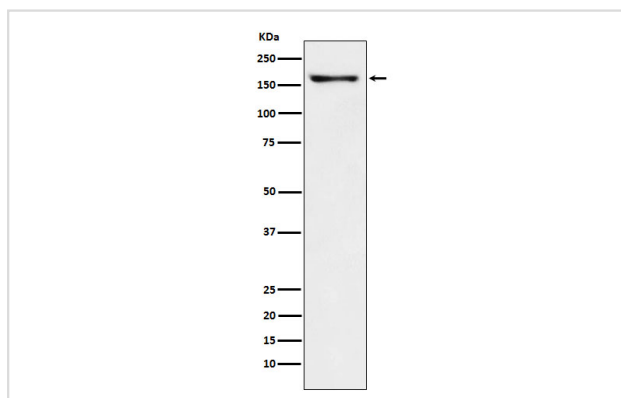
Description

Product Name	CNTP2 Rabbit mAb
Host Species	Rabbit
Clonality	Monoclonal
Isotype	Rabbit IgG
Purification	Affinity-chromatography
Applications	WB IHC
Species Reactivity	Human Mouse Rat
Specificity	CNTP2 Antibody detects endogenous levels of total CNTP2
Immunogen Description	A synthesized peptide derived from human CNTP2
Other Names	AUTS15; CDFE; CNTNAP2; CNTP2; NRXN4; PTHSL1;
Accession No.	Uniprot:Q9UHC6
Uniprot	Q9UHC6
Calculated MW	160kDa
Formulation	Rabbit IgG in phosphate buffered saline , pH 7.4, 150mM NaCl, 0.02% sodium azide and 50% glycerol.
Storage	Store at +4 Λ C short term. Store at -20 Λ C long term. Avoid freeze / thaw cycle.

Application Details

WB:1:500~1:1000IHC:1:100~1:500

Images



Western blot analysis of CNTP2 expression in Mouse brain lysate.

Product Description

May play a role in the formation of functional distinct domains critical for saltatory conduction of nerve impulses in myelinated nerve fibers. Seems to demarcate the juxtaparanodal region of the axo-glia junction.

Note: This product is for in vitro research use only