

## ERCC8 Rabbit mAb

Catalog No: #56871

Package Size: #56871-1 50ul #56871-2 100ul

Orders: order@signalwayantibody.com

Support: tech@signalwayantibody.com

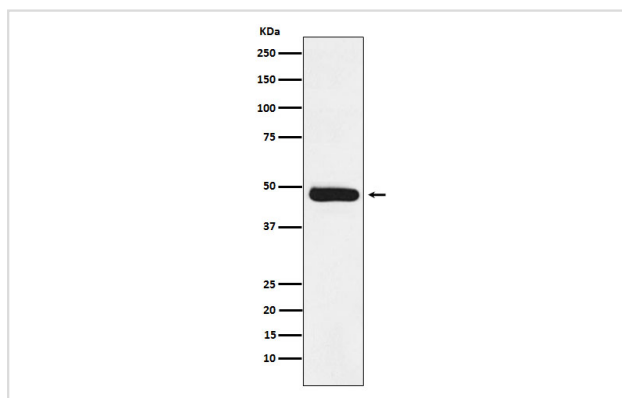
## Description

Product Name	ERCC8 Rabbit mAb
Host Species	Rabbit
Clonality	Monoclonal
Isotype	Rabbit IgG
Purification	Affinity-chromatography
Applications	WB IP
Species Reactivity	Human
Specificity	ERCC8 Antibody detects endogenous levels of total ERCC8
Immunogen Description	A synthesized peptide derived from human ERCC8
Other Names	CKN1; CSA; ERCC8;
Accession No.	Uniprot:Q13216
Uniprot	Q13216
Calculated MW	44kDa
Formulation	Rabbit IgG in phosphate buffered saline , pH 7.4, 150mM NaCl, 0.02% sodium azide and 50% glycerol.
Storage	Store at +4 $\Lambda$ C short term. Store at -20 $\Lambda$ C long term. Avoid freeze / thaw cycle.

## Application Details

WB: 1:500~1:2000 IP: 1:50

## Images



Western blot analysis of ERCC8 expression in Molt4 cell lysate.

## Product Description

Substrate-recognition component of the CSA complex, a DCX (DDB1-CUL4-X-box) E3 ubiquitin-protein ligase complex, involved in transcription-coupled nucleotide excision repair.

---

Note: This product is for in vitro research use only