

## CD1c Rabbit mAb

Catalog No: #56873

Package Size: #56873-1 50ul #56873-2 100ul

Orders: order@signalwayantibody.com

Support: tech@signalwayantibody.com

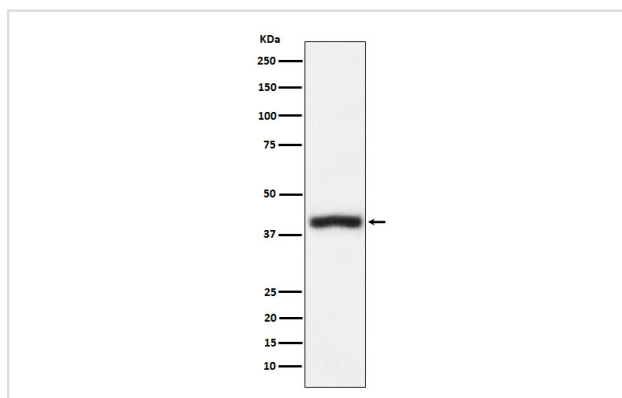
## Description

Product Name	CD1c Rabbit mAb
Host Species	Rabbit
Clonality	Monoclonal
Isotype	Rabbit IgG
Purification	Affinity-chromatography
Applications	WB
Species Reactivity	Human
Specificity	CD1c Antibody detects endogenous levels of total CD1c
Immunogen Description	A synthesized peptide derived from human CD1c
Other Names	BDCA1; CD1; CD1A; CD1c;
Accession No.	Uniprot:P29017
Uniprot	P29017
Calculated MW	38kDa
Formulation	Rabbit IgG in phosphate buffered saline , pH 7.4, 150mM NaCl, 0.02% sodium azide and 50% glycerol.
Storage	Store at +4Λ C short term. Store at -20Λ C long term. Avoid freeze / thaw cycle.

## Application Details

WB: 1:500~1:2000

## Images



Western blot analysis of CD1c expression in Jurkat cell lysate.

## Product Description

Antigen-presenting protein that binds self and non-self lipid and glycolipid antigens and presents them to T-cell receptors on natural killer T-cells.

---

Note: This product is for in vitro research use only