

COL11A1 Rabbit mAb

Catalog No: #56882

Package Size: #56882-1 50ul #56882-2 100ul

Orders: order@signalwayantibody.com

Support: tech@signalwayantibody.com

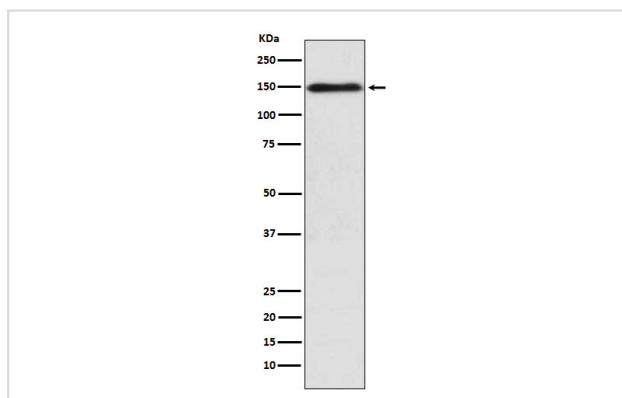
Description

Product Name	COL11A1 Rabbit mAb
Host Species	Rabbit
Clonality	Monoclonal
Isotype	Rabbit IgG
Purification	Affinity-chromatography
Applications	WB
Species Reactivity	Human
Specificity	COL11A1 Antibody detects endogenous levels of total COL11A1
Immunogen Description	A synthesized peptide derived from human COL11A1
Other Names	COL11A1; COLL6; Collagen alpha 1; collagen XI alpha 1; STL2; STL3;
Accession No.	Uniprot:P12107
Uniprot	P12107
Calculated MW	150kDa
Formulation	Rabbit IgG in phosphate buffered saline , pH 7.4, 150mM NaCl, 0.02% sodium azide and 50% glycerol.
Storage	Store at +4 Λ C short term. Store at -20 Λ C long term. Avoid freeze / thaw cycle.

Application Details

WB: 1:500~1:2000

Images



Western blot analysis of COL11A1 expression in K562 cell lysate.

Product Description

May play an important role in fibrillogenesis by controlling lateral growth of collagen II fibrils.

Note: This product is for in vitro research use only