

## MAT2A Rabbit mAb

Catalog No: #56884

Package Size: #56884-1 50ul #56884-2 100ul

Orders: order@signalwayantibody.com

Support: tech@signalwayantibody.com

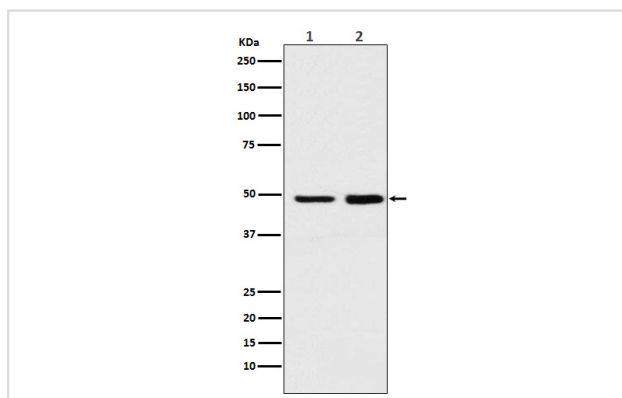
## Description

Product Name	MAT2A Rabbit mAb
Host Species	Rabbit
Clonality	Monoclonal
Isotype	Rabbit IgG
Purification	Affinity-chromatography
Applications	WB ICC/IF
Species Reactivity	Human Mouse Rat
Specificity	MAT2A Antibody detects endogenous levels of total MAT2A
Immunogen Description	A synthesized peptide derived from human MAT2A
Other Names	AMS2; MAT 2; MAT 2A; MAT II; Mat2a; MATA2; MATII; SAMS 2; SAMS2;
Accession No.	Uniprot:P31153
Uniprot	P31153
Calculated MW	48kDa
Formulation	Rabbit IgG in phosphate buffered saline , pH 7.4, 150mM NaCl, 0.02% sodium azide and 50% glycerol.
Storage	Store at +4 $\Lambda$ C short term. Store at -20 $\Lambda$ C long term. Avoid freeze / thaw cycle.

## Application Details

WB:1:500~1:2000 ICC/IF:1:50~1:200

## Images



Western blot analysis of MAT2A expression in (1) Ramos cell lysate;(2) Mouse spleen lysate.

## Product Description

Catalyzes the formation of S-adenosylmethionine from methionine and ATP.

---

Note: This product is for in vitro research use only