

## PAG Rabbit mAb

Catalog No: #56885

Package Size: #56885-1 50ul #56885-2 100ul

Orders: order@signalwayantibody.com

Support: tech@signalwayantibody.com

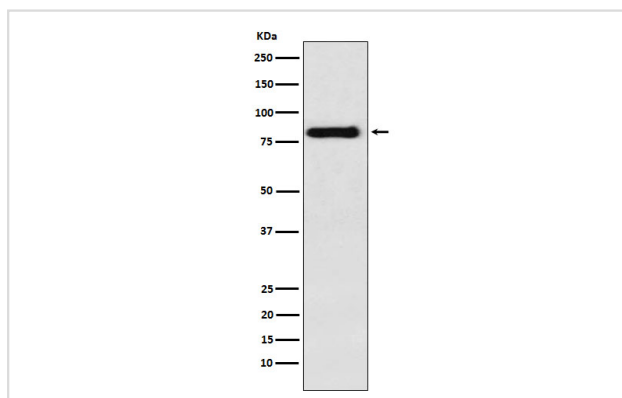
## Description

|                       |  |
|-----------------------|--|
| Product Name          | PAG Rabbit mAb   |
| Host Species          | Rabbit   |
| Clonality             | Monoclonal   |
| Isotype               | Rabbit IgG   |
| Purification          | Affinity-chromatography  |
| Applications          | WB IHC IP FC   |
| Species Reactivity    | Human Mouse Rat  |
| Specificity           | PAG Antibody detects endogenous levels of total PAG  |
| Immunogen Description | A synthesized peptide derived from human PAG   |
| Other Names           | CBP; Csk binding protein; PAG; PAG1;   |
| Accession No.         | Uniprot:Q9NWQ8   |
| Uniprot               | Q9NWQ8   |
| Calculated MW         | 80kDa  |
| Formulation           | Rabbit IgG in phosphate buffered saline , pH 7.4, 150mM NaCl, 0.02% sodium azide and 50% glycerol. |
| Storage               | Store at +4 $\Lambda$ C short term. Store at -20 $\Lambda$ C long term. Avoid freeze / thaw cycle. |

## Application Details

WB:1:500~1:2000IHC:1:50~1:200IP:1:50FC:1:100

## Images



Western blot analysis of PAG expression in Raji cell lysate.

## Product Description

Negatively regulates TCR (T-cell antigen receptor)-mediated signaling in T-cells and FCER1 (high affinity immunoglobulin epsilon receptor)-mediated signaling in mast cells. Promotes CSK activation and recruitment to lipid rafts, which results in LCK inhibition. Inhibits immunological synapse formation by preventing dynamic arrangement of lipid raft proteins.

---

Note: This product is for in vitro research use only