

ACVR1 Rabbit mAb

Catalog No: #56886

Package Size: #56886-1 50ul #56886-2 100ul

Orders: order@signalwayantibody.com

Support: tech@signalwayantibody.com

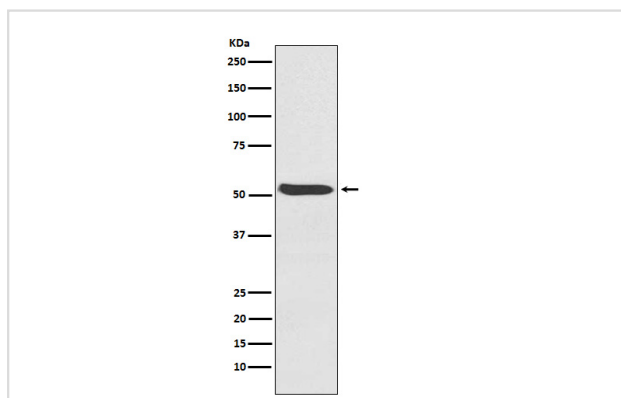
Description

Product Name	ACVR1 Rabbit mAb
Host Species	Rabbit
Clonality	Monoclonal
Isotype	Rabbit IgG
Purification	Affinity-chromatography
Applications	WB IP
Species Reactivity	Human Mouse Rat
Specificity	ACVR1 Antibody detects endogenous levels of total ACVR1
Immunogen Description	A synthesized peptide derived from human ACVR1
Other Names	ACTRI; Acvr1; ACVR1A; ACVRLK2; ALK2; FOP; SKR1; TSRI;
Accession No.	Uniprot:Q04771
Uniprot	Q04771
Calculated MW	57kDa
Formulation	Rabbit IgG in phosphate buffered saline , pH 7.4, 150mM NaCl, 0.02% sodium azide and 50% glycerol.
Storage	Store at +4Λ C short term. Store at -20Λ C long term. Avoid freeze / thaw cycle.

Application Details

WB:1:500~1:2000IP:1:50

Images



Western blot analysis of ACVR1 expression in Human fetal heart lysate.

Product Description

On ligand binding, forms a receptor complex consisting of two type II and two type I transmembrane serine/threonine kinases. Type II receptors phosphorylate and activate type I receptors which autophosphorylate, then bind and activate SMAD transcriptional regulators.

Note: This product is for in vitro research use only