

CCL23 Rabbit mAb

Catalog No: #56887

Package Size: #56887-1 50ul #56887-2 100ul

Orders: order@signalwayantibody.com

Support: tech@signalwayantibody.com

Description

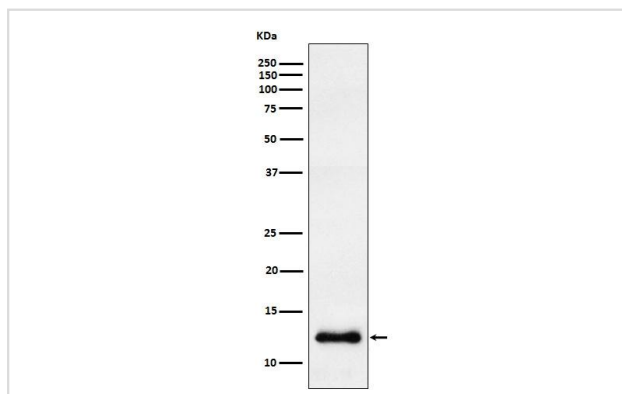
Product Name	CCL23 Rabbit mAb
Host Species	Rabbit
Clonality	Monoclonal
Clone No.	63D8
Isotype	Rabbit IgG
Purification	Affinity-chromatography
Applications	WB ICC/IF
Species Reactivity	Human
Specificity	CCL23 Antibody detects endogenous levels of total CCL23
Immunogen Description	A synthesized peptide derived from human CCL23
Target Name	CCL23
Other Names	CCL23; CKB8; Hmnp-2a; MIP3; MPIF1; SCYA23;
Accession No.	Uniprot:P55773
Uniprot	P55773
Calculated MW	13kDa
Formulation	Rabbit IgG in phosphate buffered saline , pH 7.4, 150mM NaCl, 0.02% sodium azide and 50% glycerol.
Storage	Store at +4Λ C short term. Store at -20Λ C long term. Avoid freeze / thaw cycle.

Application Details

WB:1:500~1:2000

ICC/IF:1:50~1:200

Images



All Lanes:CCL23 Antibody at 1/ 500 dilution.Lane1:HepG2 cell lysate..Proteins at 20ug per laneSecondary: Goat Anti-Rabbit IgG(HRP) at 1/20000 dilutionPredicted band size : 13kDaObserved band size: 13kDa

Product Description

Shows chemotactic activity for monocytes, resting T-lymphocytes, and neutrophils, but not for activated lymphocytes. Inhibits proliferation of myeloid

progenitor cells in colony formation assays. This protein can bind heparin. Binds CCR1. CCL23(19-99), CCL23(22-99), CCL23(27-99), CCL23(30-99) are more potent chemoattractants than the small-inducible cytokine A23.

Note: This product is for in vitro research use only