

## FSH beta Rabbit mAb

Catalog No: #56892

Package Size: #56892-1 50ul #56892-2 100ul

Orders: [order@signalwayantibody.com](mailto:order@signalwayantibody.com)Support: [tech@signalwayantibody.com](mailto:tech@signalwayantibody.com)

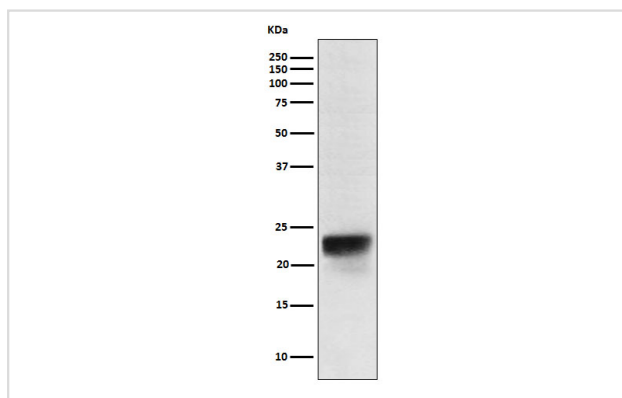
## Description

Product Name	FSH beta Rabbit mAb
Host Species	Rabbit
Clonality	Monoclonal
Isotype	Rabbit IgG
Purification	Affinity-chromatography
Applications	WB ICC/IF
Species Reactivity	Human
Specificity	FSH beta Antibody detects endogenous levels of total FSH beta
Immunogen Description	A synthesized peptide derived from human FSH beta
Other Names	FSHB; FSHbeta;
Accession No.	Uniprot:P01225
Uniprot	P01225
Calculated MW	20kDa
Formulation	Rabbit IgG in phosphate buffered saline , pH 7.4, 150mM NaCl, 0.02% sodium azide and 50% glycerol.
Storage	Store at +4Λ C short term. Store at -20Λ C long term. Avoid freeze / thaw cycle.

## Application Details

WB:1:500~1:1000ICC/IF:1:50~1:200

## Images



Western blot analysis of FSH beta expression in Human pituitary lysate.

## Product Description

Follicle stimulating hormone enables ovarian folliculogenesis to the antral follicle stage and is essential for Sertoli cell proliferation and maintenance of sperm quality in the testis.

---

Note: This product is for in vitro research use only