

## GJB1 Rabbit mAb

Catalog No: #56896

Package Size: #56896-1 50ul #56896-2 100ul

Orders: order@signalwayantibody.com

Support: tech@signalwayantibody.com

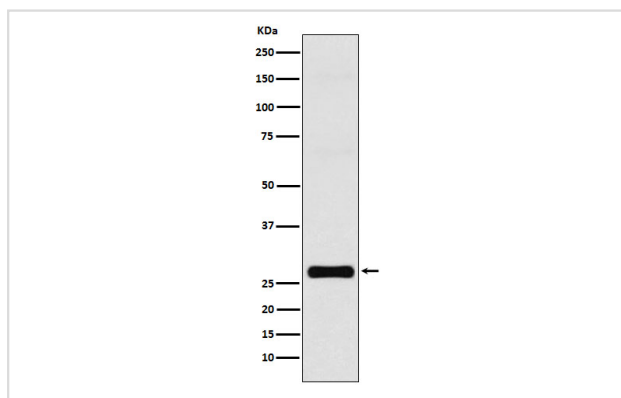
## Description

Product Name	GJB1 Rabbit mAb
Host Species	Rabbit
Clonality	Monoclonal
Isotype	Rabbit IgG
Purification	Affinity-chromatography
Applications	WB IHC FC
Species Reactivity	Human
Specificity	GJB1 Antibody detects endogenous levels of total GJB1
Immunogen Description	A synthesized peptide derived from human GJB1
Other Names	CMTX; CMTX1; Connexin32; Cx32; GJB1;
Accession No.	Uniprot:P08034
Uniprot	P08034
Calculated MW	32kDa
Formulation	Rabbit IgG in phosphate buffered saline , pH 7.4, 150mM NaCl, 0.02% sodium azide and 50% glycerol.
Storage	Store at +4 $\Lambda$ C short term. Store at -20 $\Lambda$ C long term. Avoid freeze / thaw cycle.

## Application Details

WB:1:500~1:2000IHC:1:50~1:200FC:1:50

## Images



Western blot analysis of GJB1 expression in MCF-7 cell lysate.

## Product Description

One gap junction consists of a cluster of closely packed pairs of transmembrane channels, the connexons, through which materials of low MW diffuse from one cell to a neighboring cell.

---

Note: This product is for in vitro research use only