

## ATRIP Rabbit mAb

Catalog No: #56897

Package Size: #56897-1 50ul #56897-2 100ul

Orders: order@signalwayantibody.com

Support: tech@signalwayantibody.com

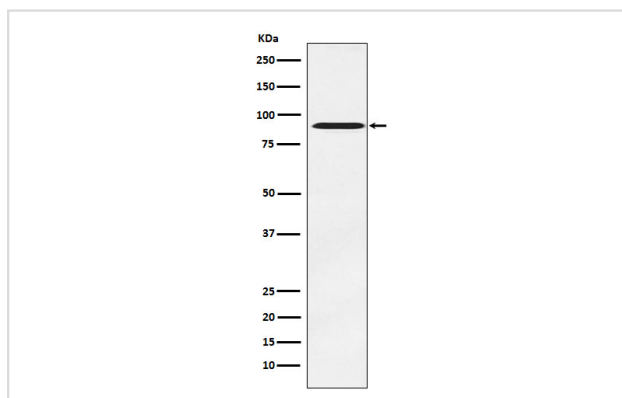
## Description

Product Name	ATRIP Rabbit mAb
Host Species	Rabbit
Clonality	Monoclonal
Isotype	Rabbit IgG
Purification	Affinity-chromatography
Applications	WB ICC/IF
Species Reactivity	Human Mouse Rat
Specificity	ATRIP Antibody detects endogenous levels of total ATRIP
Immunogen Description	A synthesized peptide derived from human ATRIP
Other Names	AGS1; ATIP; Atrip;
Accession No.	Uniprot:Q8WXE1
Uniprot	Q8WXE1
Calculated MW	86kDa
Formulation	Rabbit IgG in phosphate buffered saline , pH 7.4, 150mM NaCl, 0.02% sodium azide and 50% glycerol.
Storage	Store at +4Λ C short term. Store at -20Λ C long term. Avoid freeze / thaw cycle.

## Application Details

WB: 1:500~1:2000 ICC/IF: 1:50~1:200

## Images



Western blot analysis of ATRIP expression in PC-3 cell lysate.

## Product Description

Required for checkpoint signaling after DNA damage. Required for ATR expression, possibly by stabilizing the protein.

---

Note: This product is for in vitro research use only