

Cytokeratin 12 Rabbit mAb

Catalog No: #56902

Package Size: #56902-1 50ul #56902-2 100ul

Orders: order@signalwayantibody.com

Support: tech@signalwayantibody.com

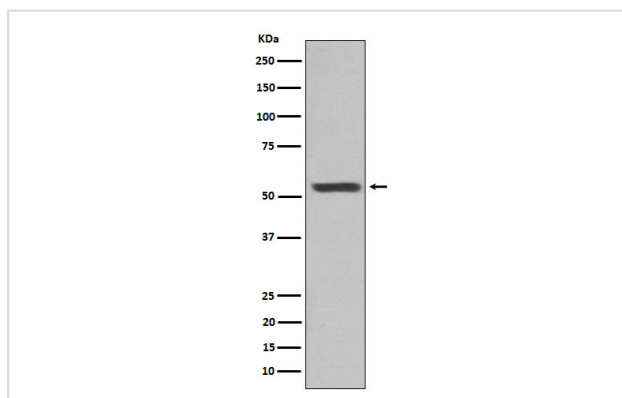
Description

Product Name	Cytokeratin 12 Rabbit mAb
Host Species	Rabbit
Clonality	Monoclonal
Isotype	Rabbit IgG
Purification	Affinity-chromatography
Applications	WB IHC ICC/IF
Species Reactivity	Human Mouse Rat
Specificity	Cytokeratin 12 Antibody detects endogenous levels of total Cytokeratin 12
Immunogen Description	A synthesized peptide derived from human Cytokeratin 12
Other Names	K12; Keratin 12; KRT12; type I cytoskeletal 12;
Accession No.	Uniprot:Q99456
Uniprot	Q99456
Calculated MW	54kDa
Formulation	Rabbit IgG in phosphate buffered saline , pH 7.4, 150mM NaCl, 0.02% sodium azide and 50% glycerol.
Storage	Store at +4Λ C short term. Store at -20Λ C long term. Avoid freeze / thaw cycle.

Application Details

WB:1:500~1:2000IHC:1:50~1:200ICC/IF:1:50~1:200

Images



Western blot analysis of Cytokeratin 12 expression in mouse eyeball lysate.

Product Description

May play a unique role in maintaining the normal corneal epithelial function. Together with KRT3, essential for the maintenance of corneal epithelium integrity.

Note: This product is for in vitro research use only