

## NAT10 Rabbit mAb

Catalog No: #56904

Package Size: #56904-1 50ul #56904-2 100ul

Orders: order@signalwayantibody.com

Support: tech@signalwayantibody.com

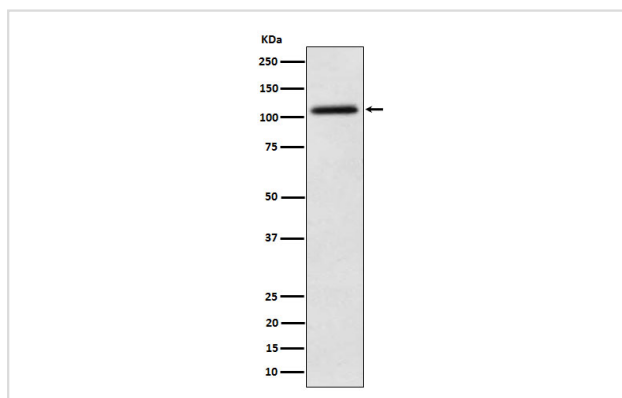
## Description

|                       |  |
|-----------------------|--|
| Product Name          | NAT10 Rabbit mAb   |
| Host Species          | Rabbit   |
| Clonality             | Monoclonal   |
| Isotype               | Rabbit IgG   |
| Purification          | Affinity-chromatography  |
| Applications          | WB IHC ICC/IF IP FC  |
| Species Reactivity    | Human Mouse Rat  |
| Specificity           | NAT10 Antibody detects endogenous levels of total NAT10  |
| Immunogen Description | A synthesized peptide derived from human NAT10   |
| Other Names           | ALP; hALP; N acetyltransferase like protein; NAT10; NET43;   |
| Accession No.         | Uniprot:Q9H0A0   |
| Uniprot               | Q9H0A0   |
| Calculated MW         | 116kDa   |
| Formulation           | Rabbit IgG in phosphate buffered saline , pH 7.4, 150mM NaCl, 0.02% sodium azide and 50% glycerol. |
| Storage               | Store at +4Λ C short term. Store at -20Λ C long term. Avoid freeze / thaw cycle.                   |

## Application Details

WB:1:500~1:2000IHC:1:50~1:200ICC/IF:1:50~1:200IP:1:50FC:1:50

## Images



Western blot analysis of NAT10 expression in HeLa cell lysate.

## Product Description

Has protein acetyltransferase activity in vitro. Can acetylate both histones and microtubules. Histone acetylation may regulate transcription and mitotic chromosome de-condensation.

---

Note: This product is for in vitro research use only