

## MRPL28 Rabbit mAb

Catalog No: #56920

Package Size: #56920-1 50ul #56920-2 100ul

Orders: order@signalwayantibody.com

Support: tech@signalwayantibody.com

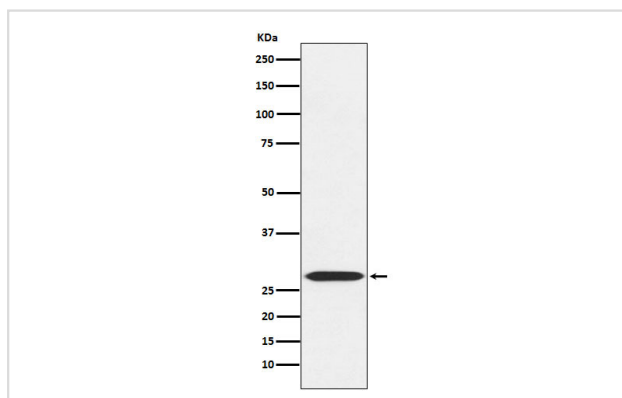
## Description

Product Name	MRPL28 Rabbit mAb
Host Species	Rabbit
Clonality	Monoclonal
Isotype	Rabbit IgG
Purification	Affinity-chromatography
Applications	WB ICC/IF IP FC
Species Reactivity	Human Mouse Rat
Specificity	MRPL28 Antibody detects endogenous levels of total MRPL28
Immunogen Description	A synthesized peptide derived from MRPL28
Other Names	L28mt; MAAT1; mrpl28; P15;
Accession No.	Uniprot:Q13084
Uniprot	Q13084
Calculated MW	30kDa
Formulation	Rabbit IgG in phosphate buffered saline , pH 7.4, 150mM NaCl, 0.02% sodium azide and 50% glycerol.
Storage	Store at +4 $\Lambda$ C short term. Store at -20 $\Lambda$ C long term. Avoid freeze / thaw cycle.

## Application Details

WB:1:500~1:2000ICC/IF:1:50~1:200IP:1:50FC:1:50

## Images



Western blot analysis of MRPL28 expression in 293 cell lysate.

## Product Description

Potentially represents an important therapeutic reagent for HLA-A24 patients. This antigen is recognized by tumor-infiltrating lymphocyte (TIL) 1290 in the context of HLA-A24.

---

Note: This product is for in vitro research use only