

CTBP2 Rabbit mAb

Catalog No: #56923

Package Size: #56923-1 50ul #56923-2 100ul

Orders: order@signalwayantibody.com

Support: tech@signalwayantibody.com

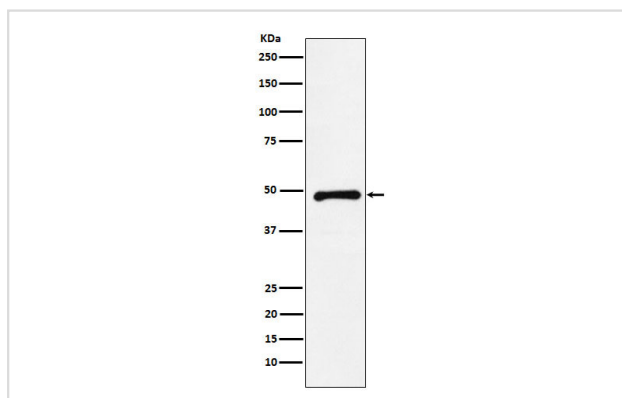
Description

| | |
|-----------------------|----------------------------------------------------------------------------------------------------|
| Product Name | CTBP2 Rabbit mAb |
| Host Species | Rabbit |
| Clonality | Monoclonal |
| Isotype | Rabbit IgG |
| Purification | Affinity-chromatography |
| Applications | WB IHC ICC/IF |
| Species Reactivity | Human Mouse Rat |
| Specificity | CTBP2 Antibody detects endogenous levels of total CTBP2 |
| Immunogen Description | A synthesized peptide derived from CTBP2 |
| Other Names | CtBP2; ribeye; |
| Accession No. | Uniprot:P56545 |
| Uniprot | P56545 |
| Calculated MW | 47kDa |
| Formulation | Rabbit IgG in phosphate buffered saline , pH 7.4, 150mM NaCl, 0.02% sodium azide and 50% glycerol. |
| Storage | Store at +4 Λ C short term. Store at -20 Λ C long term. Avoid freeze / thaw cycle. |

Application Details

WB:1:500~1:2000IHC:1:50~1:200ICC/IF:1:50~1:200

Images



Western blot analysis of CTBP2 expression in HeLa cell lysate.

Product Description

Corepressor targeting diverse transcription regulators. Functions in brown adipose tissue (BAT) differentiation. Isoform 2 probably acts as a scaffold for specialized synapses.

Note: This product is for in vitro research use only