

## GTF2I Rabbit mAb

Catalog No: #56928

Package Size: #56928-1 50ul #56928-2 100ul

Orders: order@signalwayantibody.com

Support: tech@signalwayantibody.com

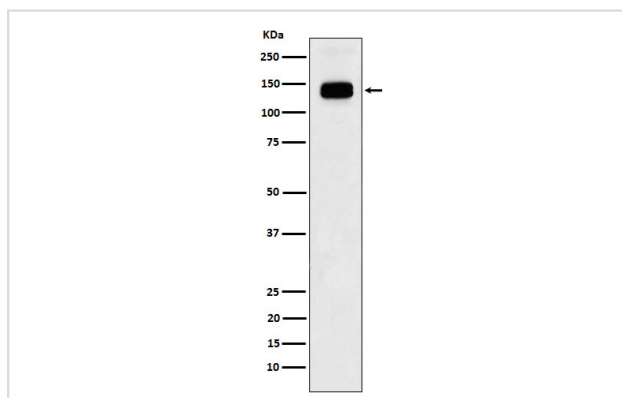
## Description

Product Name	GTF2I Rabbit mAb
Host Species	Rabbit
Clonality	Monoclonal
Isotype	Rabbit IgG
Purification	Affinity-chromatography
Applications	WB IHC ICC/IF
Species Reactivity	Human Mouse Rat
Specificity	GTF2I Antibody detects endogenous levels of total GTF2I
Immunogen Description	A synthesized peptide derived from GTF2I
Other Names	BAP135; BTKAP1; DIWS; Gtf2i; IB291; SPIN; WBS; WBSCR6;
Accession No.	Uniprot:P78347
Uniprot	P78347
Calculated MW	135kDa
Formulation	Rabbit IgG in phosphate buffered saline , pH 7.4, 150mM NaCl, 0.02% sodium azide and 50% glycerol.
Storage	Store at +4 $\Lambda$ C short term. Store at -20 $\Lambda$ C long term. Avoid freeze / thaw cycle.

## Application Details

WB:1:500~1:2000IHC:1:50~1:200ICC/IF:1:50~1:200

## Images



Western blot analysis of GTF2I expression in Jurkat cell lysate.

## Product Description

Interacts with the basal transcription machinery by coordinating the formation of a multiprotein complex at the C-FOS promoter, and linking specific signal responsive activator complexes.

---

Note: This product is for in vitro research use only