

CCL27 Rabbit mAb

Catalog No: #56929

Package Size: #56929-1 50ul #56929-2 100ul

Orders: order@signalwayantibody.com

Support: tech@signalwayantibody.com

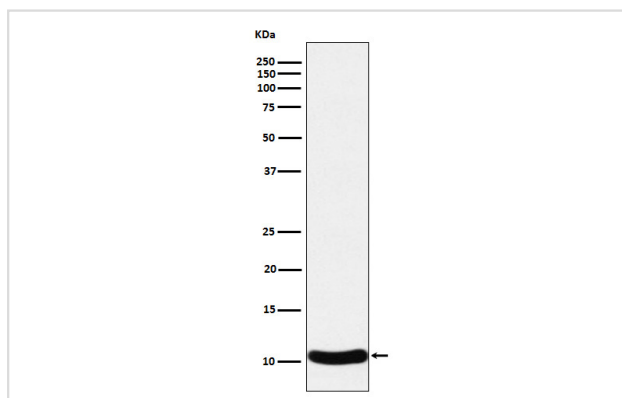
Description

Product Name	CCL27 Rabbit mAb
Host Species	Rabbit
Clonality	Monoclonal
Isotype	Rabbit IgG
Purification	Affinity-chromatography
Applications	WB ICC/IF FC
Species Reactivity	Human Mouse Rat
Specificity	CCL27 Antibody detects endogenous levels of total CCL27
Immunogen Description	A synthesized peptide derived from human CCL27
Other Names	ALP; Ccl27; CTACK; CTAK; ILC; PESKY; SCYA27; Small inducible cytokine A27;
Accession No.	Uniprot:Q9Y4X3
Uniprot	Q9Y4X3
Calculated MW	13kDa
Formulation	Rabbit IgG in phosphate buffered saline , pH 7.4, 150mM NaCl, 0.02% sodium azide and 50% glycerol.
Storage	Store at +4 Λ C short term. Store at -20 Λ C long term. Avoid freeze / thaw cycle.

Application Details

WB:1:500~1:2000 ICC/IF:1:50~1:200 FC:1:50

Images



Western blot analysis of CCL27 expression in Human CCL27 recombinant protein cell lysate.

Product Description

Chemotactic factor that attracts skin-associated memory T-lymphocytes. May play a role in mediating homing of lymphocytes to cutaneous sites. Binds to CCR10.

Note: This product is for in vitro research use only