

NCS1 Rabbit mAb

Catalog No: #56934

Package Size: #56934-1 50ul #56934-2 100ul

Orders: order@signalwayantibody.comSupport: tech@signalwayantibody.com

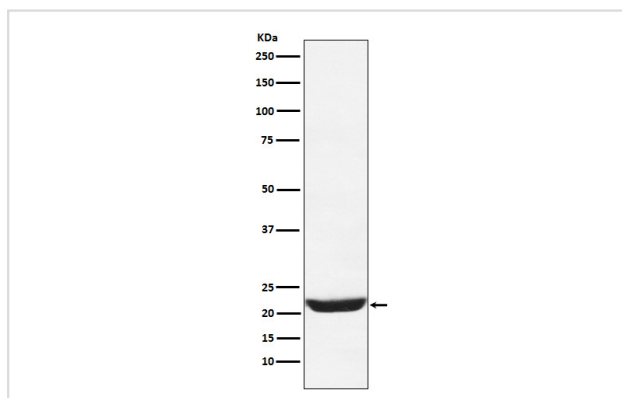
Description

Product Name	NCS1 Rabbit mAb
Host Species	Rabbit
Clonality	Monoclonal
Isotype	Rabbit IgG
Purification	Affinity-chromatography
Applications	WB IHC FC
Species Reactivity	Human Mouse Rat
Specificity	NCS1 Antibody detects endogenous levels of total NCS1
Immunogen Description	A synthesized peptide derived from human NCS1
Other Names	FLUP; FREQ; Frequenin; Mfreq; ncs1;
Accession No.	Uniprot:P62166
Uniprot	P62166
Calculated MW	22kDa
Formulation	Rabbit IgG in phosphate buffered saline , pH 7.4, 150mM NaCl, 0.02% sodium azide and 50% glycerol.
Storage	Store at +4 Λ C short term. Store at -20 Λ C long term. Avoid freeze / thaw cycle.

Application Details

WB: 1:500~1:2000 IHC: 1:50~1:200 FC: 1:50

Images



Western blot analysis of NCS1 expression in 293T cell lysate.

Product Description

Neuronal calcium sensor, regulator of G protein-coupled receptor phosphorylation in a calcium dependent manner. Directly regulates GRK1 (RHOK), but not GRK2 to GRK5. Can substitute for calmodulin (By similarity).

Note: This product is for in vitro research use only