

Olig3 Rabbit mAb

Catalog No: #56935

Package Size: #56935-1 50ul #56935-2 100ul

Orders: order@signalwayantibody.comSupport: tech@signalwayantibody.com

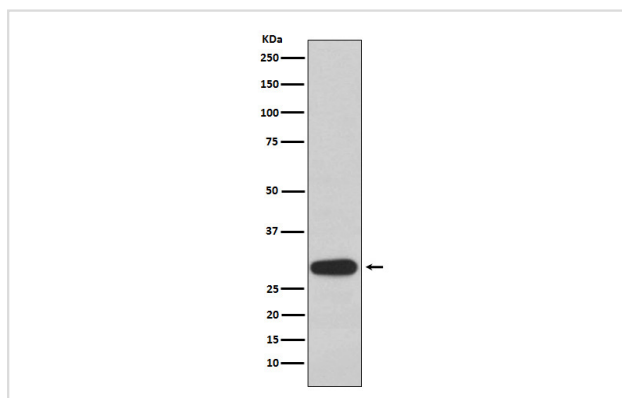
Description

Product Name	Olig3 Rabbit mAb
Host Species	Rabbit
Clonality	Monoclonal
Isotype	Rabbit IgG
Purification	Affinity-chromatography
Applications	WB ICC/IF
Species Reactivity	Human
Specificity	Olig3 Antibody detects endogenous levels of total Olig3
Immunogen Description	A synthesized peptide derived from human Olig3
Other Names	bHLHB7; bHLHe20; Olig3; Oligo3;
Accession No.	Uniprot:Q7RTU3
Uniprot	Q7RTU3
Calculated MW	29kDa
Formulation	Rabbit IgG in phosphate buffered saline , pH 7.4, 150mM NaCl, 0.02% sodium azide and 50% glycerol.
Storage	Store at +4Λ C short term. Store at -20Λ C long term. Avoid freeze / thaw cycle.

Application Details

WB: 1:500~1:2000 ICC/IF: 1:50~1:200

Images



Western blot analysis of Olig3 expression in 293T cell lysate.

Product Description

May determine the distinct specification program of class A neurons in the dorsal part of the spinal cord and suppress specification of class B neurons.

Note: This product is for in vitro research use only