

SNRPA1 Rabbit mAb

Catalog No: #56942

Package Size: #56942-1 50ul #56942-2 100ul

Orders: order@signalwayantibody.com

Support: tech@signalwayantibody.com

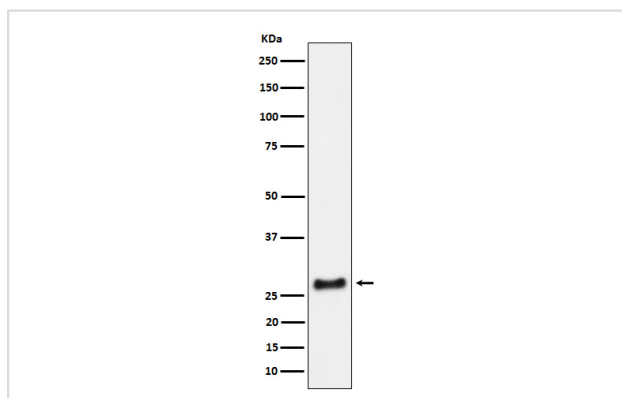
Description

Product Name	SNRPA1 Rabbit mAb
Host Species	Rabbit
Clonality	Monoclonal
Isotype	Rabbit IgG
Purification	Affinity-chromatography
Applications	WB IHC
Species Reactivity	Human Mouse Rat
Specificity	SNRPA1 Antibody detects endogenous levels of total SNRPA1
Immunogen Description	A synthesized peptide derived from human SNRPA1
Other Names	Lea1; SNRPA1;
Accession No.	Uniprot:P09661
Uniprot	P09661
Calculated MW	28kDa
Formulation	Rabbit IgG in phosphate buffered saline , pH 7.4, 150mM NaCl, 0.02% sodium azide and 50% glycerol.
Storage	Store at +4Λ C short term. Store at -20Λ C long term. Avoid freeze / thaw cycle.

Application Details

WB:1:500~1:2000IHC:1:50~1:200

Images



Western blot analysis of SNRPA1 expression in HeLa cell lysate.

Product Description

This protein is associated with sn-RNP U2. It helps the A' protein to bind stem loop IV of U2 snRNA.

Note: This product is for in vitro research use only