

SUOX Rabbit mAb

Catalog No: #56945

Package Size: #56945-1 50ul #56945-2 100ul

Orders: order@signalwayantibody.com

Support: tech@signalwayantibody.com

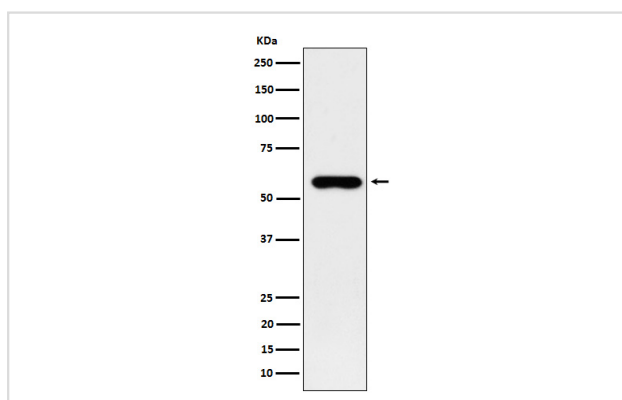
Description

Product Name	SUOX Rabbit mAb
Host Species	Rabbit
Clonality	Monoclonal
Isotype	Rabbit IgG
Purification	Affinity-chromatography
Applications	WB IHC
Species Reactivity	Human Rat
Specificity	SUOX Antibody detects endogenous levels of total SUOX
Immunogen Description	A synthesized peptide derived from human SUOX
Other Names	Sulfite oxidase; Suox;
Accession No.	Uniprot:P51687
Uniprot	P51687
Calculated MW	60kDa
Formulation	Rabbit IgG in phosphate buffered saline , pH 7.4, 150mM NaCl, 0.02% sodium azide and 50% glycerol.
Storage	Store at +4Λ C short term. Store at -20Λ C long term. Avoid freeze / thaw cycle.

Application Details

WB:1:500~1:2000IHC:1:50~1:200

Images



Western blot analysis of SUOX expression in 293T cell lysate.

Product Description

Catalytic activity:Sulfite + O₂ + H₂O = sulfate + H₂O₂.

Note: This product is for in vitro research use only