

## CHD3 Rabbit mAb

Catalog No: #56950

Package Size: #56950-1 50ul #56950-2 100ul

Orders: [order@signalwayantibody.com](mailto:order@signalwayantibody.com)Support: [tech@signalwayantibody.com](mailto:tech@signalwayantibody.com)

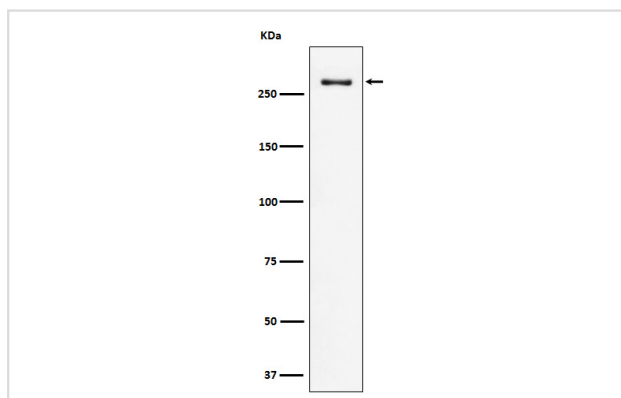
## Description

Product Name	CHD3 Rabbit mAb
Host Species	Rabbit
Clonality	Monoclonal
Isotype	Rabbit IgG
Purification	Affinity-chromatography
Applications	WB IHC ICC/IF FC
Species Reactivity	Human
Specificity	CHD3 Antibody detects endogenous levels of total CHD3
Immunogen Description	A synthesized peptide derived from human CHD3
Other Names	Chd3; Chd7; hZFH; Mi2 ALPHA; Prp7; Prp9 1; ZFH;
Accession No.	Uniprot:Q12873
Uniprot	Q12873
Calculated MW	260kDa
Formulation	Rabbit IgG in phosphate buffered saline , pH 7.4, 150mM NaCl, 0.02% sodium azide and 50% glycerol.
Storage	Store at +4Λ C short term. Store at -20Λ C long term. Avoid freeze / thaw cycle.

## Application Details

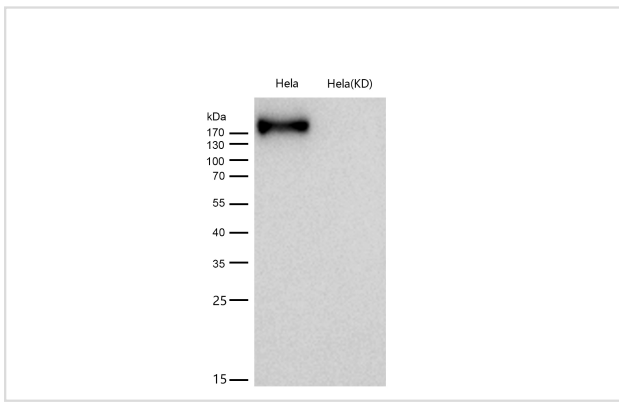
WB:1:500~1:2000IHC:1:50~1:200ICC/IF:1:50~1:200FC:1:50

## Images



Western blot analysis of CHD3 expression in HeLa cell lysate.

All lanes use the Antibody at 1:1K dilution for 1 hour at room temperature.



## Product Description

Component of the histone deacetylase NuRD complex which participates in the remodeling of chromatin by deacetylating histones. Required for anchoring centrosomal pericentrin in both interphase and mitosis, for spindle organization and centrosome integrity.

Note: This product is for in vitro research use only