

CD58 Rabbit mAb

Catalog No: #56951

Package Size: #56951-1 50ul #56951-2 100ul

Orders: order@signalwayantibody.com

Support: tech@signalwayantibody.com

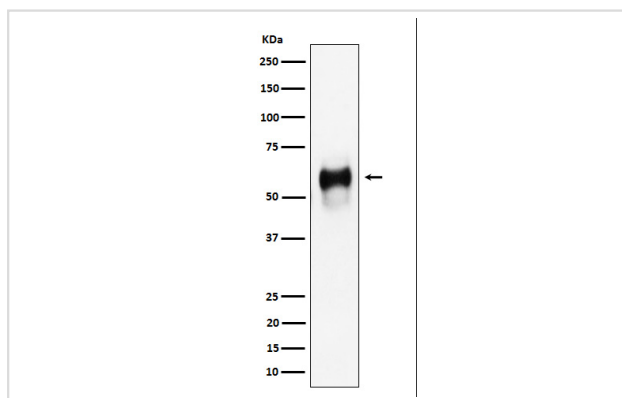
Description

| | |
|-----------------------|--|
| Product Name | CD58 Rabbit mAb |
| Host Species | Rabbit |
| Clonality | Monoclonal |
| Isotype | Rabbit IgG |
| Purification | Affinity-chromatography |
| Applications | WB IP FC |
| Species Reactivity | Human |
| Specificity | CD58 Antibody detects endogenous levels of total CD58 |
| Immunogen Description | A synthesized peptide derived from human CD58 |
| Other Names | AG3; CD58; LFA3; |
| Accession No. | Uniprot:P19256 |
| Uniprot | P19256 |
| Calculated MW | 50-75kDa |
| Formulation | Rabbit IgG in phosphate buffered saline , pH 7.4, 150mM NaCl, 0.02% sodium azide and 50% glycerol. |
| Storage | Store at +4Λ C short term. Store at -20Λ C long term. Avoid freeze / thaw cycle. |

Application Details

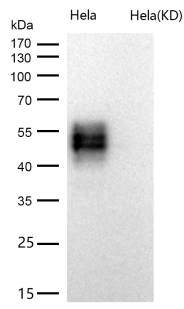
WB:1:500~1:2000IP:1:50FC:1:50

Images



Western blot analysis of CD58 expression in Raji cell lysate.

All lanes use the Antibody at 1:1K dilution for 1 hour at room temperature.



Product Description

Ligand of the T-lymphocyte CD2 glycoprotein.

Note: This product is for in vitro research use only