

MVD Rabbit mAb

Catalog No: #56952

Package Size: #56952-1 50ul #56952-2 100ul

Orders: order@signalwayantibody.com

Support: tech@signalwayantibody.com

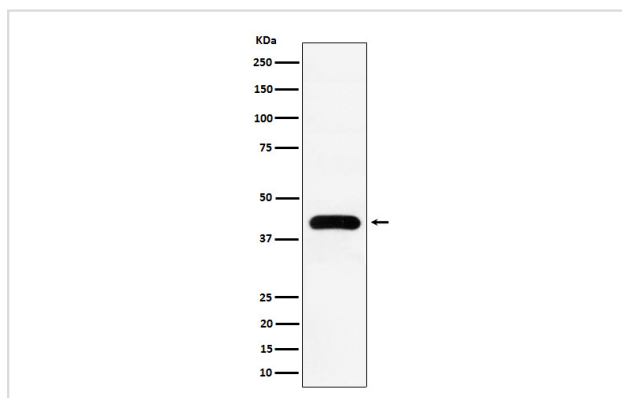
Description

Product Name	MVD Rabbit mAb
Host Species	Rabbit
Clonality	Monoclonal
Isotype	Rabbit IgG
Purification	Affinity-chromatography
Applications	WB
Species Reactivity	Human
Specificity	MVD Antibody detects endogenous levels of total MVD
Immunogen Description	A synthesized peptide derived from human MVD
Other Names	MDDase; MPD; Mvd;
Accession No.	Uniprot:P53602
Uniprot	P53602
Calculated MW	43kDa
Formulation	Rabbit IgG in phosphate buffered saline , pH 7.4, 150mM NaCl, 0.02% sodium azide and 50% glycerol.
Storage	Store at +4Λ C short term. Store at -20Λ C long term. Avoid freeze / thaw cycle.

Application Details

WB: 1:500~1:2000

Images



Western blot analysis of MVD expression in K562 cell lysate.

Product Description

Performs the first committed step in the biosynthesis of isoprenes.

Note: This product is for in vitro research use only