

## Human IgG1 Rabbit mAb

Catalog No: #56953

Package Size: #56953-1 50ul #56953-2 100ul

Orders: order@signalwayantibody.com

Support: tech@signalwayantibody.com

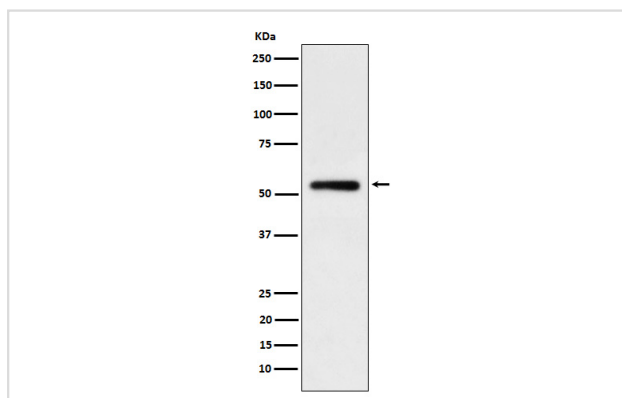
## Description

Product Name	Human IgG1 Rabbit mAb
Host Species	Rabbit
Clonality	Monoclonal
Isotype	Rabbit IgG
Purification	Affinity-chromatography
Applications	WB
Species Reactivity	Human
Specificity	Human IgG1 Antibody detects endogenous levels of total human IgG1
Immunogen Description	A synthesized peptide derived from human IgG1
Other Names	Ig gamma 1 chain C region; IGHG1; Immunoglobulin Gm1;
Accession No.	Uniprot:P01857
Uniprot	P01857
Calculated MW	52kDa
Formulation	Rabbit IgG in phosphate buffered saline , pH 7.4, 150mM NaCl, 0.02% sodium azide and 50% glycerol.
Storage	Store at +4Λ C short term. Store at -20Λ C long term. Avoid freeze / thaw cycle.

## Application Details

WB: 1:500~1:2000

## Images



Western blot analysis of human IgG1 expression in Human tonsil cell lysate.

## Product Description

There are four IgG subclasses (IgG1, 2, 3 and 4) in humans, named in order of their abundance in serum (IgG1 being the most abundant).

---

Note: This product is for in vitro research use only