

## CaMKII Rabbit mAb

Catalog No: #56959

Package Size: #56959-1 50ul #56959-2 100ul

Orders: order@signalwayantibody.com

Support: tech@signalwayantibody.com

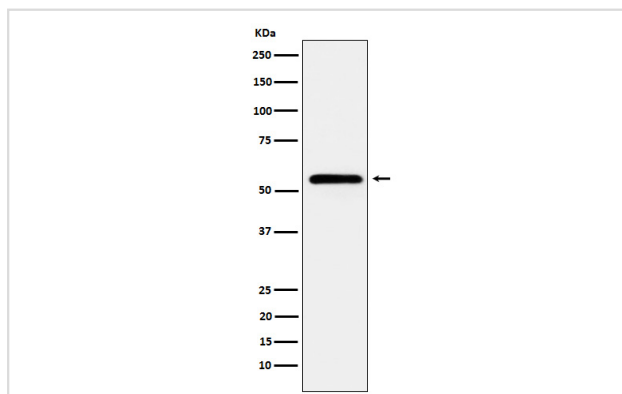
## Description

Product Name	CaMKII Rabbit mAb
Host Species	Rabbit
Clonality	Monoclonal
Isotype	Rabbit IgG
Purification	Affinity-chromatography
Applications	WB FC
Species Reactivity	Human Mouse Rat
Specificity	CaMKII Antibody detects endogenous levels of total CaMKII
Immunogen Description	A synthesized peptide derived from human CaMKII
Other Names	Calcium/calmodulin dependent protein kinase II alpha; Calcium/calmodulin dependent protein kinase II beta; Calcium/calmodulin dependent protein kinase II delta; Calcium/calmodulin dependent protein kinase II gamma; CaM kinase II alpha; CaM kinase II; CaM kinase II beta; CaM kinase II delta; CaM kinase II gamma; CAMK2; Camk2a; CAMK2B; CAMK2D; CAMK2G; CAMKA;
Accession No.	Uniprot:Q9UQM7/Q13554/Q13555/Q13557
Uniprot	Q9UQM7/Q13554/Q13555/Q13557
Calculated MW	50-70 kDa
Formulation	Rabbit IgG in phosphate buffered saline , pH 7.4, 150mM NaCl, 0.02% sodium azide and 50% glycerol.
Storage	Store at +4 $\Lambda$ C short term. Store at -20 $\Lambda$ C long term. Avoid freeze / thaw cycle.

## Application Details

WB:1:500~1:2000FC:1:50

## Images



Western blot analysis of CaMKII expression in HeLa cell lysate.

## Product Description

CaM-kinase II (CAMK2) is a prominent kinase in the central nervous system that may function in long-term potentiation and neurotransmitter release.

Member of the NMDAR signaling complex in excitatory synapses it may regulate NMDAR-dependent potentiation of the AMPAR and synaptic plasticity.

---

Note: This product is for in vitro research use only