

HLA DMB Rabbit mAb

Catalog No: #56971

Package Size: #56971-1 50ul #56971-2 100ul

Orders: order@signalwayantibody.com

Support: tech@signalwayantibody.com

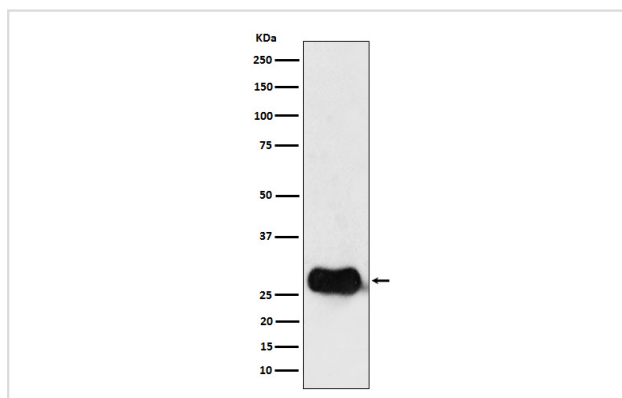
Description

| | |
|-----------------------|--|
| Product Name | HLA DMB Rabbit mAb |
| Host Species | Rabbit |
| Clonality | Monoclonal |
| Isotype | Rabbit IgG |
| Purification | Affinity-chromatography |
| Applications | WB FC |
| Species Reactivity | Human |
| Specificity | HLA DMB Antibody detects endogenous levels of total HLA DMB |
| Immunogen Description | A synthesized peptide derived from human HLA DMB |
| Other Names | DMB; RING7; |
| Accession No. | Uniprot:P28068 |
| Uniprot | P28068 |
| Calculated MW | 29kDa |
| Formulation | Rabbit IgG in phosphate buffered saline , pH 7.4, 150mM NaCl, 0.02% sodium azide and 50% glycerol. |
| Storage | Store at +4Λ C short term. Store at -20Λ C long term. Avoid freeze / thaw cycle. |

Application Details

WB:1:500~1:2000FC:1:50

Images



Western blot analysis of HLA DMB expression in Raji cell lysate.

Product Description

HLA-DMB belongs to the HLA class II beta chain paralogues. This class II molecule is a heterodimer consisting of an alpha (DMA) and a beta (DMB) chain, both anchored in the membrane.

Note: This product is for in vitro research use only