

ARPC2 Rabbit mAb

Catalog No: #56974

Package Size: #56974-1 50ul #56974-2 100ul

Orders: order@signalwayantibody.com

Support: tech@signalwayantibody.com

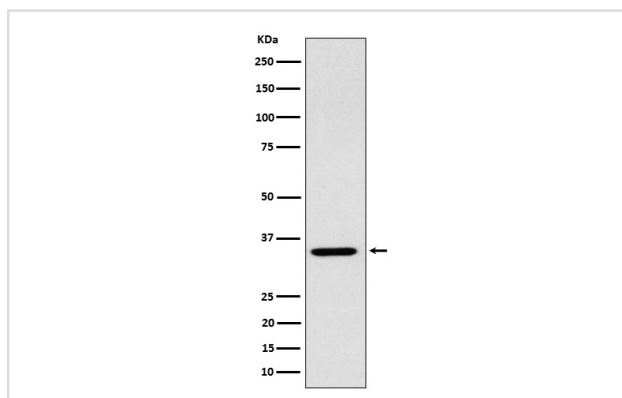
Description

Product Name	ARPC2 Rabbit mAb
Host Species	Rabbit
Clonality	Monoclonal
Isotype	Rabbit IgG
Purification	Affinity-chromatography
Applications	WB IHC ICC/IF IP FC
Species Reactivity	Human Mouse Rat
Specificity	ARPC2 Antibody detects endogenous levels of total ARPC2
Immunogen Description	A synthesized peptide derived from human ARPC2
Other Names	ARC34; Arpc2; p34Arc; PNAS139; PRO2446;
Accession No.	Uniprot:O15144
Uniprot	O15144
Calculated MW	34kDa
Formulation	Rabbit IgG in phosphate buffered saline , pH 7.4, 150mM NaCl, 0.02% sodium azide and 50% glycerol.
Storage	Store at +4 Λ C short term. Store at -20 Λ C long term. Avoid freeze / thaw cycle.

Application Details

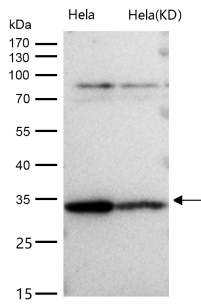
WB:1:500~1:2000IHC:1:50~1:200ICC/IF:1:50~1:200IP:1:50FC:1:50

Images



Western blot analysis of ARPC2 expression in 293 cell lysate.

All lanes use the Antibody at 1:1K dilution for 1 hour at room temperature.



Product Description

Functions as actin-binding component of the Arp2/3 complex which is involved in regulation of actin polymerization and together with an activating nucleation-promoting factor (NPF) mediates the formation of branched actin networks. Seems to contact the mother actin filament.

Note: This product is for in vitro research use only