

## ACAT2 Rabbit mAb

Catalog No: #56976

Package Size: #56976-1 50ul #56976-2 100ul

Orders: order@signalwayantibody.com

Support: tech@signalwayantibody.com

## Description

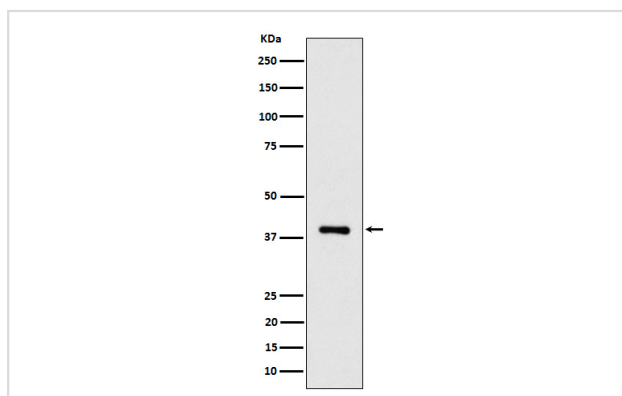
Product Name	ACAT2 Rabbit mAb
Host Species	Rabbit
Clonality	Monoclonal
Isotype	Rabbit IgG
Purification	Affinity-chromatography
Applications	WB IHC
Species Reactivity	Human Mouse Rat
Specificity	ACAT2 Antibody detects endogenous levels of total ACAT2
Immunogen Description	A synthesized peptide derived from human ACAT2
Other Names	Acat2; ACTL;
Accession No.	Uniprot:Q9BWD1
Uniprot	Q9BWD1
Calculated MW	38kDa
Formulation	Rabbit IgG in phosphate buffered saline , pH 7.4, 150mM NaCl, 0.02% sodium azide and 50% glycerol.
Storage	Store at +4Λ C short term. Store at -20Λ C long term. Avoid freeze / thaw cycle.

## Application Details

WB: 1:500~1:2000

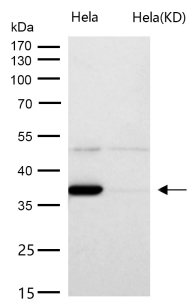
IHC: 1:50~1:200

## Images



Western blot analysis of ACAT2 expression in K562 cell lysate.

All lanes use the Antibody at 1:1K dilution for 1 hour at room temperature.



## Product Description

Belongs to the thiolase family.

Note: This product is for in vitro research use only