

## Prostein Rabbit mAb

Catalog No: #56978

Package Size: #56978-1 50ul #56978-2 100ul

Orders: order@signalwayantibody.com

Support: tech@signalwayantibody.com

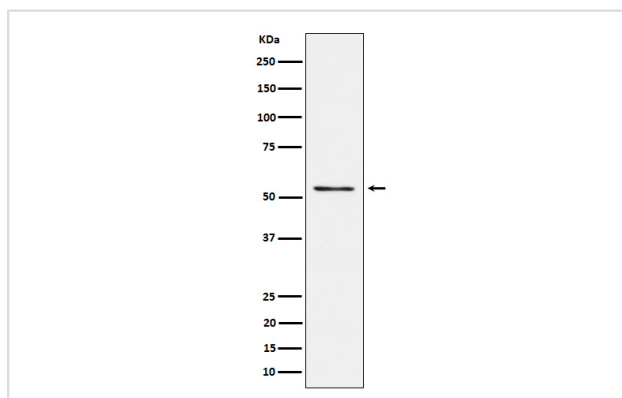
## Description

Product Name	Prostein Rabbit mAb
Host Species	Rabbit
Clonality	Monoclonal
Isotype	Rabbit IgG
Purification	Affinity-chromatography
Applications	WB IHC
Species Reactivity	Human
Specificity	Prostein Antibody detects endogenous levels of total Prostein
Immunogen Description	A synthesized peptide derived from human Prostein
Other Names	IPCA6; PCANAP2; PCANAP6; PCANAP8; Prostein; PRST; Slc45a3;
Accession No.	Uniprot:Q96JT2
Uniprot	Q96JT2
Calculated MW	52kDa
Formulation	Rabbit IgG in phosphate buffered saline , pH 7.4, 150mM NaCl, 0.02% sodium azide and 50% glycerol.
Storage	Store at +4Λ C short term. Store at -20Λ C long term. Avoid freeze / thaw cycle.

## Application Details

WB:1:500~1:2000IHC:1:50~1:200

## Images



Western blot analysis of Prostein expression in LnCaP cell lysate.

## Product Description

Marker for prostate cells. May be used, in case of prostate cancers, as a target antigen for prostate carcinomas-directed cytotoxic T-cell lymphocytes.

---

Note: This product is for in vitro research use only