

## TUG Rabbit mAb

Catalog No: #56983

Package Size: #56983-1 50ul #56983-2 100ul

Orders: order@signalwayantibody.com

Support: tech@signalwayantibody.com

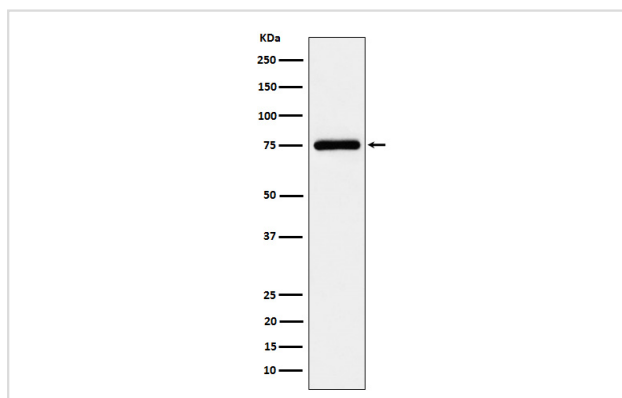
## Description

Product Name	TUG Rabbit mAb
Host Species	Rabbit
Clonality	Monoclonal
Isotype	Rabbit IgG
Purification	Affinity-chromatography
Applications	WB IHC
Species Reactivity	Human Mouse Rat
Specificity	TUG Antibody detects endogenous levels of total TUG
Immunogen Description	A synthesized peptide derived from human TUG
Other Names	ASPC; ASPCR1; ASPL; ASPS; Aspscr1; RCC17; TUG; UBXD9; UBXN9;
Accession No.	Uniprot:Q9BZE9
Uniprot	Q9BZE9
Calculated MW	70-80kDa
Formulation	Rabbit IgG in phosphate buffered saline , pH 7.4, 150mM NaCl, 0.02% sodium azide and 50% glycerol.
Storage	Store at +4Λ C short term. Store at -20Λ C long term. Avoid freeze / thaw cycle.

## Application Details

WB:1:500~1:2000IHC:1:50~1:200

## Images



Western blot analysis of TUG expression in K562 cell lysate.

## Product Description

Tethering protein that sequesters GLUT4-containing vesicles in the cytoplasm in the absence of insulin. Modulates the amount of GLUT4 that is available at the cell surface.

---

Note: This product is for in vitro research use only