

COX6B1 Rabbit mAb

Catalog No: #56985

Package Size: #56985-1 50ul #56985-2 100ul

Orders: order@signalwayantibody.com

Support: tech@signalwayantibody.com

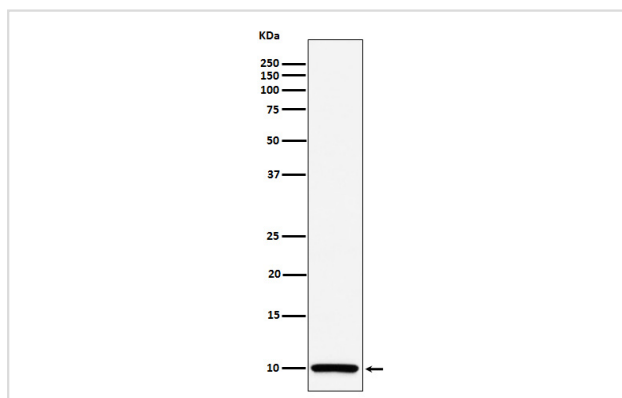
Description

Product Name	COX6B1 Rabbit mAb
Host Species	Rabbit
Clonality	Monoclonal
Isotype	Rabbit IgG
Purification	Affinity-chromatography
Applications	WB IHC ICC/IF
Species Reactivity	Human
Specificity	COX6B1 Antibody detects endogenous levels of total COX6B1
Immunogen Description	A synthesized peptide derived from human COX6B1
Other Names	COX6B; COX6B1; COXG; COXVIb1;
Accession No.	Uniprot:P14854
Uniprot	P14854
Calculated MW	10kDa
Formulation	Rabbit IgG in phosphate buffered saline , pH 7.4, 150mM NaCl, 0.02% sodium azide and 50% glycerol.
Storage	Store at +4 Λ C short term. Store at -20 Λ C long term. Avoid freeze / thaw cycle.

Application Details

WB: 1:500~1:2000 IHC: 1:50~1:200 ICC/IF: 1:50~1:200

Images



Western blot analysis of COX6B1 expression in Caco 2 cell lysate.

Product Description

Connects the two COX monomers into the physiological dimeric form.

Note: This product is for in vitro research use only