

## ELP4 Rabbit mAb

Catalog No: #56993

Package Size: #56993-1 50ul #56993-2 100ul

Orders: order@signalwayantibody.com

Support: tech@signalwayantibody.com

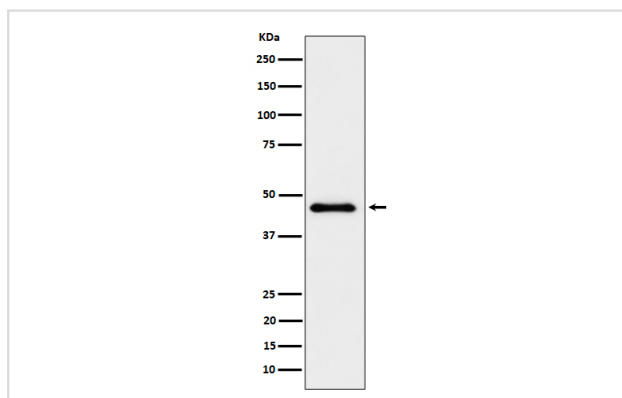
## Description

Product Name	ELP4 Rabbit mAb
Host Species	Rabbit
Clonality	Monoclonal
Isotype	Rabbit IgG
Purification	Affinity-chromatography
Applications	WB IHC ICC/IF
Species Reactivity	Human Mouse
Specificity	ELP4 Antibody detects endogenous levels of total ELP4
Immunogen Description	A synthesized peptide derived from human ELP4
Other Names	ELP4; hELP4; PAX6NEB; PAXNEB;
Accession No.	Uniprot:Q96EB1
Uniprot	Q96EB1
Calculated MW	46kDa
Formulation	Rabbit IgG in phosphate buffered saline , pH 7.4, 150mM NaCl, 0.02% sodium azide and 50% glycerol.
Storage	Store at +4 $\Lambda$ C short term. Store at -20 $\Lambda$ C long term. Avoid freeze / thaw cycle.

## Application Details

WB:1:500~1:2000IHC:1:50~1:200ICC/IF:1:50~1:200

## Images



Western blot analysis of ELP4 expression in HeLa cell lysate.

## Product Description

Acts as subunit of the RNA polymerase II elongator complex, which is a histone acetyltransferase component of the RNA polymerase II (Pol II) holoenzyme and is involved in transcriptional elongation. Elongator may play a role in chromatin remodeling and is involved in acetylation of histones H3 and probably H4.

---

Note: This product is for in vitro research use only