

## SAMM50 Rabbit mAb

Catalog No: #57003

Package Size: #57003-1 50ul #57003-2 100ul

Orders: order@signalwayantibody.com

Support: tech@signalwayantibody.com

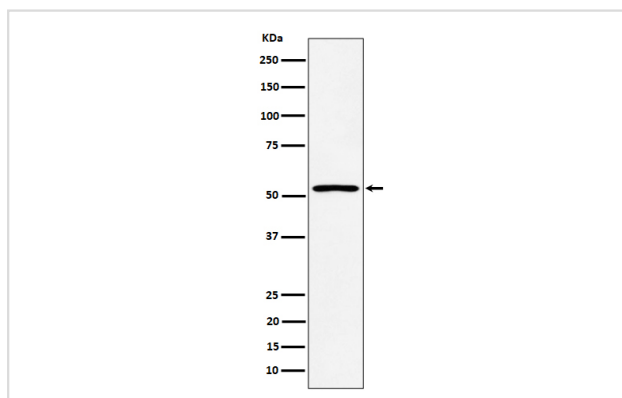
## Description

Product Name	SAMM50 Rabbit mAb
Host Species	Rabbit
Clonality	Monoclonal
Isotype	Rabbit IgG
Purification	Affinity-chromatography
Applications	WB IHC
Species Reactivity	Human
Specificity	SAMM50 Antibody detects endogenous levels of total SAMM50
Immunogen Description	A synthesized peptide derived from human SAMM50
Other Names	CGI 51; OMP85; SAM50; Samm50; TOB55;
Accession No.	Uniprot:Q9Y512
Uniprot	Q9Y512
Calculated MW	52kDa
Formulation	Rabbit IgG in phosphate buffered saline , pH 7.4, 150mM NaCl, 0.02% sodium azide and 50% glycerol.
Storage	Store at +4Λ C short term. Store at -20Λ C long term. Avoid freeze / thaw cycle.

## Application Details

WB: 1:500~1:2000 IHC: 1:50~1:200

## Images



Western blot analysis of SAMM50 expression in HepG2 cell lysate.

## Product Description

May be required for the assembly pathway of mitochondrial outer membrane proteins.

---

Note: This product is for in vitro research use only