

## PPM1E Rabbit mAb

Catalog No: #57008

Package Size: #57008-1 50ul #57008-2 100ul

Orders: order@signalwayantibody.com

Support: tech@signalwayantibody.com

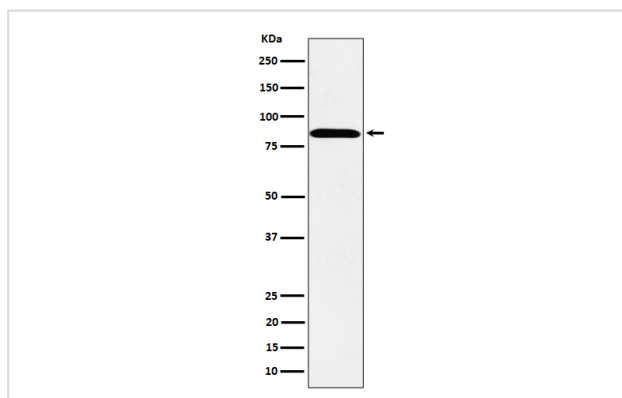
## Description

Product Name	PPM1E Rabbit mAb
Host Species	Rabbit
Clonality	Monoclonal
Isotype	Rabbit IgG
Purification	Affinity-chromatography
Applications	WB FC
Species Reactivity	Human
Specificity	PPM1E Antibody detects endogenous levels of total PPM1E
Immunogen Description	A synthesized peptide derived from human PPM1E
Other Names	CaMKN; POPX1; PP2CH; Ppm1e;
Accession No.	Uniprot:Q8WY54
Uniprot	Q8WY54
Calculated MW	90kDa
Formulation	Rabbit IgG in phosphate buffered saline , pH 7.4, 150mM NaCl, 0.02% sodium azide and 50% glycerol.
Storage	Store at +4Λ C short term. Store at -20Λ C long term. Avoid freeze / thaw cycle.

## Application Details

WB:1:500~1:2000FC:1:50

## Images



Western blot analysis of PPM1E expression in SH-SY5Y cell lysate.

## Product Description

Protein phosphatase that inactivates multifunctional CaM kinases such as CAMK4 and CAMK2 (By similarity). Dephosphorylates and inactivates PAK.

---

Note: This product is for in vitro research use only