

## SR protein repeat Rabbit mAb

Catalog No: #57009

Package Size: #57009-1 50ul #57009-2 100ul

Orders: order@signalwayantibody.com

Support: tech@signalwayantibody.com

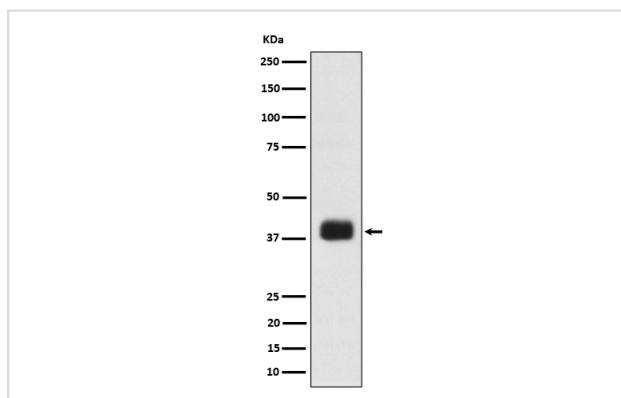
## Description

Product Name	SR protein repeat Rabbit mAb
Host Species	Rabbit
Clonality	Monoclonal
Isotype	Rabbit IgG
Purification	Affinity-chromatography
Applications	WB IHC
Species Reactivity	Human
Specificity	SR protein repeat Antibody detects endogenous levels of total SR protein repeat
Immunogen Description	A synthesized peptide derived from human SR protein repeat
Other Names	B52; SFRS6; Splicing factor; SRP55; SRSF6;
Accession No.	Uniprot:Q13247
Uniprot	Q13247
Calculated MW	38-45kDa
Formulation	Rabbit IgG in phosphate buffered saline , pH 7.4, 150mM NaCl, 0.02% sodium azide and 50% glycerol.
Storage	Store at +4 $\Lambda$ C short term. Store at -20 $\Lambda$ C long term. Avoid freeze / thaw cycle.

## Application Details

WB:1:500~1:2000IHC:1:50~1:200

## Images



Western blot analysis of SR protein repeat expression in K562 cell lysate.

## Product Description

Plays a role in constitutive splicing and can modulate the selection of alternative splice sites. Represses the splicing of MAPT/Tau exon 10.

---

Note: This product is for in vitro research use only