

CHM Rabbit mAb

Catalog No: #57010

Package Size: #57010-1 50ul #57010-2 100ul

Orders: order@signalwayantibody.com

Support: tech@signalwayantibody.com

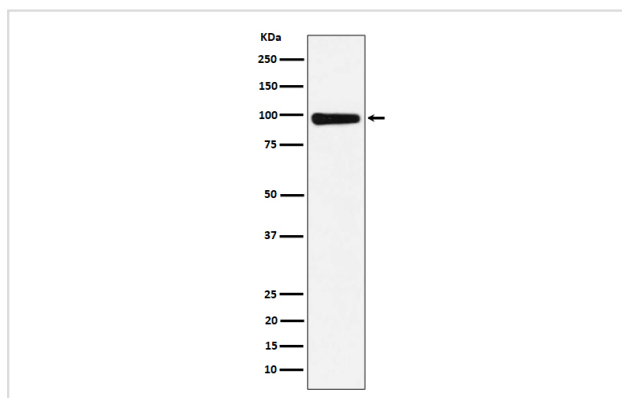
Description

Product Name	CHM Rabbit mAb
Host Species	Rabbit
Clonality	Monoclonal
Isotype	Rabbit IgG
Purification	Affinity-chromatography
Applications	WB ICC/IF
Species Reactivity	Human Mouse Rat
Specificity	CHM Antibody detects endogenous levels of total CHM
Immunogen Description	A synthesized peptide derived from human CHM
Other Names	CHM; Choroideraemia protein; GGTA; REP1; TCD;
Accession No.	Uniprot:P24386
Uniprot	P24386
Calculated MW	95kDa
Formulation	Rabbit IgG in phosphate buffered saline , pH 7.4, 150mM NaCl, 0.02% sodium azide and 50% glycerol.
Storage	Store at +4Λ C short term. Store at -20Λ C long term. Avoid freeze / thaw cycle.

Application Details

WB: 1:500~1:2000 ICC/IF: 1:50~1:200

Images



Western blot analysis of CHM expression in 293T cell lysate.

Product Description

Binds unprenylated Rab proteins, presents it to the catalytic Rab GGase dimer, and remains bound to it after the geranylgeranyl transfer reaction.

Note: This product is for in vitro research use only