

## C1s Rabbit mAb

Catalog No: #57012

Package Size: #57012-1 50ul #57012-2 100ul

Orders: order@signalwayantibody.com

Support: tech@signalwayantibody.com

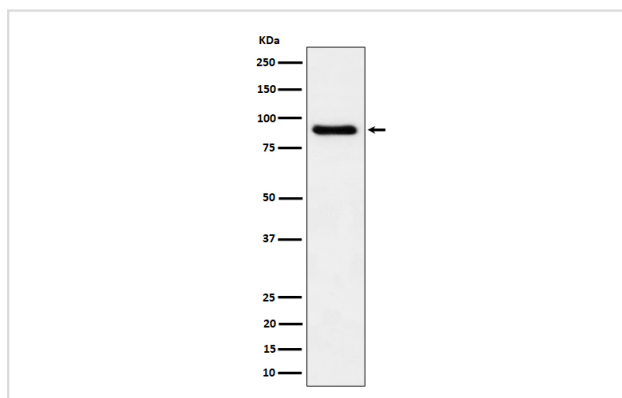
## Description

Product Name	C1s Rabbit mAb
Host Species	Rabbit
Clonality	Monoclonal
Isotype	Rabbit IgG
Purification	Affinity-chromatography
Applications	WB IHC IP
Species Reactivity	Human
Specificity	C1s Antibody detects endogenous levels of total C1s
Immunogen Description	A synthesized peptide derived from human C1s
Other Names	C1 esterase; C1S;
Accession No.	Uniprot:P09871
Uniprot	P09871
Calculated MW	90kDa
Formulation	Rabbit IgG in phosphate buffered saline , pH 7.4, 150mM NaCl, 0.02% sodium azide and 50% glycerol.
Storage	Store at +4Λ C short term. Store at -20Λ C long term. Avoid freeze / thaw cycle.

## Application Details

WB:1:500~1:2000IHC:1:50~1:200IP:1:50

## Images



Western blot analysis of C1s expression in human plasma cell lysate.

## Product Description

C1s B chain is a serine protease that combines with C1q and C1r to form C1, the first component of the classical pathway of the complement system. C1r activates C1s so that it can, in turn, activate C2 and C4.

---

Note: This product is for in vitro research use only