

## ERp19 Rabbit mAb

Catalog No: #57014

Package Size: #57014-1 50ul #57014-2 100ul

Orders: order@signalwayantibody.com

Support: tech@signalwayantibody.com

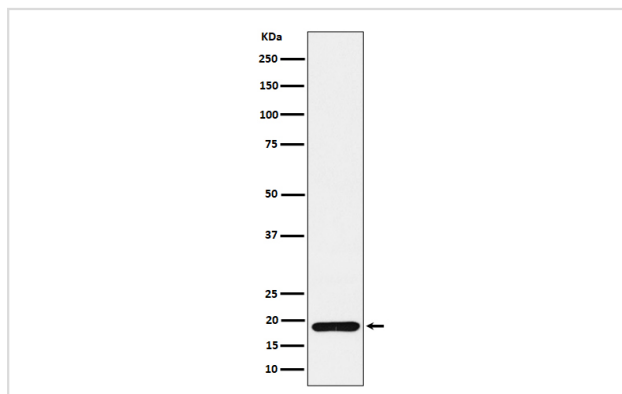
## Description

Product Name	ERp19 Rabbit mAb
Host Species	Rabbit
Clonality	Monoclonal
Isotype	Rabbit IgG
Purification	Affinity-chromatography
Applications	WB IHC ICC/IF
Species Reactivity	Human Mouse Rat
Specificity	ERp19 Antibody detects endogenous levels of total ERp19
Immunogen Description	A synthesized peptide derived from human ERp19
Other Names	AG1; AGR1; ER protein 18; ER protein 19; ERP 18; ERP16; ERP19; hAG1; hTLP19; PDIA16; TLP19; TXNDC12;
Accession No.	Uniprot:O95881
Uniprot	O95881
Calculated MW	17kDa
Formulation	Rabbit IgG in phosphate buffered saline , pH 7.4, 150mM NaCl, 0.02% sodium azide and 50% glycerol.
Storage	Store at +4 $\Lambda$ C short term. Store at -20 $\Lambda$ C long term. Avoid freeze / thaw cycle.

## Application Details

WB:1:500~1:2000IHC:1:50~1:200ICC/IF:1:50~1:200

## Images



Western blot analysis of ERp19 expression in 293T cell lysate.

## Product Description

ERp19 belongs to the thioredoxin superfamily. Members of this superfamily possess a thioredoxin fold with a consensus active-site sequence (CxxC) and have roles in redox regulation, defense against oxidative stress, refolding of disulfide-containing proteins, and regulation of transcription factors.

---

Note: This product is for in vitro research use only