

MYL12B Rabbit mAb

Catalog No: #57015

Package Size: #57015-1 50ul #57015-2 100ul

Orders: order@signalwayantibody.com

Support: tech@signalwayantibody.com

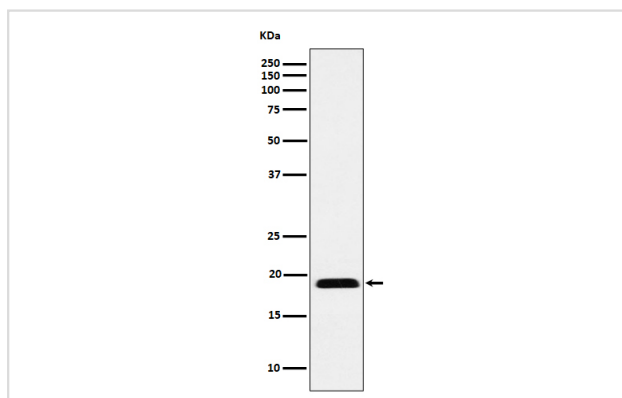
Description

Product Name	MYL12B Rabbit mAb
Host Species	Rabbit
Clonality	Monoclonal
Isotype	Rabbit IgG
Purification	Affinity-chromatography
Applications	WB IHC ICC/IF
Species Reactivity	Human Mouse Rat
Specificity	MYL12B Antibody detects endogenous levels of total MYL12B
Immunogen Description	A synthesized peptide derived from human MYL12B
Other Names	MLC 2A; MLC20; MRLC2; MYL12B; MYLC2B;
Accession No.	Uniprot:O14950
Uniprot	O14950
Calculated MW	18kDa
Formulation	Rabbit IgG in phosphate buffered saline , pH 7.4, 150mM NaCl, 0.02% sodium azide and 50% glycerol.
Storage	Store at +4 Λ C short term. Store at -20 Λ C long term. Avoid freeze / thaw cycle.

Application Details

WB:1:500~1:2000IHC:1:50~1:200ICC/IF:1:50~1:200

Images



Western blot analysis of MYL12B expression in Jurkat cell lysate.

Product Description

Myosin regulatory subunit that plays an important role in regulation of both smooth muscle and nonmuscle cell contractile activity via its phosphorylation.

Note: This product is for in vitro research use only